





Introduction

Japan Overseas Railway System Association (JORSA) is an organization dedicated to promoting the export of Japanese railway systems. JORSA is composed of 39 member companies (as of November 2023), including 29 manufacturers, 2 engineering firms, and 8 trading companies. It represents all Japanese railway systems and the industry as a whole.

The JORSA Members catalog issued in 2019 was recently updated and republished. It introduces the member companies by business category, providing company overviews, product information, export data, etc., in addition to introducing JORSA's own activities.

Being established in 1953 as a specially authorized organization under the Export and Import Transaction Act of Japan, Japan Overseas Railway System Association (JORSA) has been conducting various activities below to promote the export of Japanese railway systems. Railways are an indispensable means of transportation for the development of countries and cities, as railways can transport passengers and cargoes in large quantities and speedily compared to other transportation modes. Emerging countries are prioritizing the development and expansion of railway networks as national projects, while developed countries are actively pursuing high-speed railways and urban transportation systems. Railways are considered an important and environmentally-friendly social infrastructure. Compared to other transportation modes, railways have lower environmental impact, higher energy efficiency and have less CO₂ emissions. JORSA will continue to work with member companies to facilitate the transportation and economic development of countries worldwide and contribute to global environmental conservation, through the export of high-quality Japanese railway technology and systems.

Organization Overview

Name	: Japan Overseas Railway System Association
Established	: March 10, 1953
Statutory law	: Export and Import Transaction Act
Location	: Tekko Bldg. 3F, 1-8-2 Marunouchi, Chiyoda-ku, Tokyo 100-0005 JAPAN
President	: Shuji Okane
Number of members	: 39 (As of November 2023)



<https://www.jorsa.or.jp/en/>

Main Activities

■ Market Research and Information Service

JORSA gathers information on overseas railways and publishes materials summarizing the railway markets in specific countries to provide a wide array of valuable information to member companies and related parties.

- Publication of the Railway Market Handbook series country-by-country
- Research and dissemination of overseas railway information
- Acquisition and curation of documents and literature

■ Publication and Public Relations Activities

JORSA publishes the following materials to disseminate information to member companies and to introduce Japan's high-quality railway systems overseas.

- JORSA quarterly magazine
- Japanese Railway Information, a technical information bulletin
- Subject-specific booklets for overseas
- JORSA website

■ Overseas Exhibitions

JORSA exhibits at major railway exhibitions overseas to introduce Japan's superior railway technology.

■ Enhancement of Export Capabilities

JORSA is conducting the following activities to facilitate the export of Japanese railway systems overseas.

● Lectures

JORSA presents lectures by experts in various railway-related fields to members.

● Overseas Seminars and Study Tour

JORSA holds seminars focusing on the railways of a specific country or region that have future development potentials. It also organizes study tours for members to visit railway-related government agencies, operators, manufacturers, etc. in a specific country or region for market research purpose.

● Railway Study Tour in Japan

JORSA organizes study tours for members to visit operators' facilities, manufacturers, etc. in Japan.

● Invitation of Foreign Dignitaries

When railway-related dignitaries from overseas visit Japan, JORSA takes advantage of the opportunity to hold information exchange and networking events. It also helps to arrange visits to operators' facilities, manufacturers, etc.

● Invitation of Railway Personnel from Overseas

JORSA invites railway personnel from overseas to visit Japanese manufacturers and operators' facilities with the aims of deepening understandings of Japanese railways and enhancing the export opportunities of Japanese railway systems.

■ Trade Insurance

JORSA assists member companies in their applications for trade insurance.



InnoTrans 2018



InnoTrans 2022



UITP 2019



Publication of the Railway Market Handbook series country-by-country



Public relations materials



Railway Study Tour in Japan



Invitation of Foreign Dignitaries



Invitation of Railway Personnel from Overseas



Lectures



Overseas Seminars



Overseas Study Tour

Rolling Stock

Electric System

Signaling System

Components

**Engineering
Company**

**Trading
Company
(Contractor)**

- Rolling Stock
- Electric System
- Signaling System
- Components
- Engineering Company
- Trading Company (Contractor)

"Trading Company" refers to global business enterprises. Their business includes trading operations, project development, consultancy services, and manufacturing operations. It may also serve as a railway turnkey system contractor, railway operator, and/or maintenance provider in collaboration with partners.

Rolling Stock	ALNA SHARYO CO., LTD.	5
	Hitachi, Ltd.	6
	JAPAN TRANSPORT ENGINEERING COMPANY	7
	Kawasaki Railcar Manufacturing Co., Ltd.	8
	The Kinki Sharyo Co., Ltd.	9
	Niigata Transys Co., Ltd.	10
	NIPPON SHARYO, LTD.	11
	Fuji Electric Co., Ltd.	12
	MITSUBISHI ELECTRIC CORPORATION	13
	Toshiba Infrastructure Systems & Solutions Corporation	14
TOYO DENKI SEIZO K.K.	15	
Kyosan Electric Manufacturing Co., Ltd.	16	
NIPPON SIGNAL CO., LTD.	17	
CombiWith Corporation	18	
DAIDO CASTINGS CO., LTD.	19	
The Furukawa Battery Co., Ltd.	20	
Hayashi Soji Corporation	21	
Hitachi Nico Transmission Co., Ltd.	22	
KINTETSU RAILCAR ENGINEERING CO., LTD.	23	
Nabtesco Corporation	24	
NAKAMURA JICO CO., LTD.	25	
NARITA MFG., LTD.	26	
Nihon Sharyou Senjouki Co., Ltd.	27	
NIPPON STEEL CORPORATION	28	
NKK SWITCHES CO., LTD.	29	
Suganuma Seisakusho Co., Ltd.	30	
Taisei Techno Co., Ltd.	31	
TOHO SHEET & FRAME CO., LTD.	32	
Yutaka Manufacturing Co., Ltd.	33	
Mitsubishi Heavy Industries, Ltd.	34	
Toyo Engineering Corporation	35	
Leading Company (Tractor)	ITOCHU Corporation	36
	Marubeni Corporation	37
	Mitsubishi Corporation	38
	MITSUI & CO., LTD.	39
	Mitsui & Co. Plant Systems, Ltd.	40
	Sojitz Corporation	41
	Sumitomo Corporation	42
	Yashima & Co., Ltd.	43



<https://alna-sharyo.co.jp>

Company Name	ALNA SHARYO CO., LTD.		
Representative	Tatsuya Tajima Representative Director and Company President	Capital	JPY 20 million *
		Net Sales	JPY 3,333 million *
Established	December 3, 2001		
Employees	133 *		
Head Office	1-2 Hankyushojaku, Settsu, Osaka 566-0013, Japan		
Manufacturing Facilities, Branches and Subsidiaries			
	Shojaku works		

* : As of March 31, 2023

Our company is active in two sectors:
the manufacture and refurbishment of railway rolling stock, especially streetcars, and the repair and maintenance of rolling stock owned by the Hankyu Corporation Group and other companies. We enjoy the top share in Japan for streetcars delivered. We developed and now manufacture the first super-low floor light rail vehicles (named "Little Dancer") produced in Japan, and are delivering them to different parts of the country.



Fukui railway type F2000



Hankai tramway type 1101



lyo railway type 5000



Nagasaki electric tramway type 6000



Kagoshima city tram type 7500



Company Profile

<https://www.hitachirail.com>

Company Name	Hitachi, Ltd. (Kabushiki Kaisha Hitachi Seisakusho)		
Representative	Keiji Kojima Representative Executive Officer, President & CEO	Capital	JPY 462,817 million *
		Revenues	JPY 736,000 million (Railway section)
Established	February 1, 1920 [Founded in 1910]	Adjusted Operating Income	JPY 40,300 million (Railway section)
Employees	322,525 *		
Head Office	6-6, Marunouchi 1-chome, Chiyoda-ku, Tokyo, 100-8280 Japan		
Manufacturing Facilities, Branches and Subsidiaries			
Main factories: Kasado/Mito (Japan), Newton Aycliffe (UK), Pistoia/Napoli/Reggio Calabria (Italy), Miami/Pittsburgh (US)			
Main locations: Tokyo, London, Naples, Genoa			

* : Consolidated, as of end of March 2023

Overview / Products and Services

Hitachi Rail is a fully integrated, global provider of rail solutions across rolling stock, signalling, operation, service & maintenance, digital technology and turnkey solutions. With a presence in 26 countries and over 14,500 employees, our mission is to contribute to society through the continuous development of superior rail transport solutions. Additionally, we are developing the next generation of digital innovation products and services, utilising the Hitachi Lumada IoT platform. In response to the megatrends of the mobility sector, we are designing and developing products using data to better society.



'Skyline' - the fully autonomous urban railway system in Honolulu, the United States



The tri-mode 'Blues' battery hybrid train

Company Profile

<https://www.j-trec.co.jp/eng/>

Company Name	JAPAN TRANSPORT ENGINEERING COMPANY		
Representative	Takao Nishiyama President and Representative Director	Capital	JPY 3,100 million *
Established	April 2, 2012	Total Assets	JPY 63,265 million *
Employees	1,429	Net Assets	JPY 29,975 million *
Head Office	3-1 Okawa, Kanazawa-ku, Yokohama-shi, Kanagawa 236-0043 Japan	Net Sales	JPY 37,086 million *
Manufacturing Facilities, Branches and Subsidiaries		Operating Income	JPY 1,011 million *
• Yokohama factory • Niitsu factory • Wakayama factory			

* : As of March 31, 2023

Overview

Succeeding the business of Tokyu Car Corporation, the forerunner of stainless steel railcars manufacturing established in 1946, J-TREC was founded in 2012 as a part of JR East group. With the capability of manufacturing sophisticated stainless steel train, we offer "sustina" platform as a new type of EMU across the world, as well as High Speed Railway, for instance Japanese Shinkansen, hybrid trains, luxury trains and freight containers. We will keep contributing to the railway system in the world while we strive for technology development and provide the total engineering for railway industry including the field of Internet of Things and maintenance in cooperation with JR East group.

Products and Services

"sustina" is a new type of stainless steel EMU. Applying the common platform, J-TREC has realized with reduced whole life cycle cost including initial and maintenance cost. Moreover, sustina utilizes universal design concept and improves passenger experience on board. As "sustina HYBRID" series, we also offer diesel hybrid DEMU and battery EMU, which enable energy savings and are environmentally friendly. In addition, we were responsible for the production of JR East's HYBARI (Hydrogen Fuel Cell Hybrid Train) (FV-E991 series) in 2022.



MRT Purple Line in Bangkok, Thailand



Series FV-991 for JR EAST



Series 1000-1890 for Keikyu Corporation



Series E235 for JR East



Series E353 for JR EAST



Series E7 for JR EAST



Company Profile

<https://global.kawasaki.com/en/mobility/rail/>

Company Name	Kawasaki Railcar Manufacturing Co., Ltd.		
Representative	Hiroshi Murao President	Capital	JPY 9,685 million
Established	October 1, 2021		
Employees	3,473 (Consolidated as of March 31, 2023)		
Head Office	Kobe Head Office 1-18, Wadayama-dori 2-chome, Hyogo-ku, Kobe, Hyogo 652-0884, Japan		
Manufacturing Facilities, Branches and Subsidiaries	Tokyo Head Office, Kawasaki Rail Car, Inc. (New York) Kawasaki Motors Manufacturing Corp., U.S.A. (Nebraska) Manufacturing facilities and branches: 7 in Japan, 2 overseas		

Overview / Products and Services

In October 2021, our company started a new chapter as "Kawasaki Railcar Manufacturing Co., Ltd.". Since commencing the manufacture of rolling stock in 1906, our company has accumulated technical knowledge and high productivity and has manufactured many vehicles such as electric train coaches, freight cars, electric locomotives, and diesel locomotives.

We deliver our products to customers not only in Japan but also overseas including the United States, Taiwan, Singapore and Bangladesh. For instance, in the U.S., the rolling stock manufactured at two plants, Kawasaki Rail Car, Inc. in Yonkers, New York and Kawasaki Motors Manufacturing Corp., U.S.A. in Lincoln, Nebraska and also at Hyogo Works in Japan has become an essential means of transportation for the people in major metropolitan areas including New York, Philadelphia, Boston and Washington DC.

In the near future, railways will be even faster and more comfortable than they are today. It is expected that a more important role of integrated transportation systems will be further strengthened as an environmentally friendly public transportation system that can contribute to carbon neutrality, in order to reduce congestion and take environmentally friendly measures in large cities throughout Asia.

We will utilize our diverse technologies and know-how to innovate in rolling stock technology, and in order to meet a variety of market needs, aim not only to manufacture rolling stock, but also to provide services throughout their life cycle and to be a solution provider for railway systems in general.



M-8 Passenger Cars
for Metro-North Railroad - USA



M-9 Passenger Cars
for Long Island Rail Road - USA



R211 Subway Cars
for MTA New York City Transit - USA



EMU for Dhaka MRT Line-6
- Bangladesh



Thomson-East Coast Line T251 MRT Train
- Singapore



EMU for Taichung Green Line MRT
- Taiwan

Company Profile

<https://www.kinkisharyo.co.jp/english/>

Company Name	The Kinki Sharyo Co., Ltd.		
Representative	Tomio Yoshikawa President	Capital	JPY 5,252,799,666
Established	November 18, 1939 [Founded in December 19, 1920]	Total Assets	JPY 55.4 billion (2022 FY)
Employees	1,000 (Parent Company)	Net Assets	JPY 27.2 billion (2022 FY)
Head Office	2-2-46, Inada-Uemachi, Higashi-Osaka City, Osaka, 577-8511 Japan	Net Sales	JPY 35.8 billion (2022 FY)
Manufacturing Facilities, Branches and Subsidiaries	Tokuan Factory (Osaka) KINKISHARYO International, L.L.C. (U.S.A.) Rail Transit Consultants, Inc. (U.S.A.) Tokyo Office, Nagoya Office, Kyushu Office		
	Operating Income JPY 1.2 billion (2022 FY)		

Overview

Since our foundation in 1920, KINKISHARYO has been manufacturing rolling stock.

Our high quality products, which serve as both means of transportation and as a symbol of society, are specifically designed and customized to match the culture and environment in the various regions. We entered into overseas markets in the 1940s, and began delivering rolling stock to North America, Middle East and various countries throughout Asia.

In the US market, we have designed and manufactured more than 700 LRVs (Light Rail Vehicles). Our subsidiary, KINKISHARYO International, L.L.C. provides the High-Floor LRVs Type P3010 to Los Angeles County Metropolitan Transit Authority from their factory in California.

Our design is also highly valued internationally. For example, the train for Doha Metro, which started the soft opening of section 1 in 2019, were awarded 3 of international design prizes below. The interior design is inspired by the traditional design and culture in Qatar.

- reddot award 2017
- iF design award 2017
- German design award 2018

Railway attract attention from all over the world due to building infrastructures in developing countries, mitigating environmental concerns and resolving traffic congestion. We are proud of being able to contribute to the global community by manufacturing rolling stock that are user-friendly, high quality, safe and reliable with our accumulated knowledge and our engineering technology.



High-Floor LRV Type P3010 for Los Angeles County
Metropolitan Transit Authority, U.S.A.



Doha Metro for Qatar Rail



Company Profile

<http://www.niigata-transys.com/en>

Company Name	Niigata Transys Co., Ltd.			
Representative	Haruhiko Shimada	President	Capital	JPY 1 billion
Established	February 3, 2003 [Formerly Niigata Engineering Co., Ltd.(1910)]			
Employees	425			
Head Office	5-2756-3 Higashiko, Seiro-machi, Kitakanbara-gun, Niigata 957-0101 Japan			
Manufacturing Facilities, Branches and Subsidiaries	5-2756-3 Higashiko, Seiro-machi, Kitakanbara-gun, Niigata 957-0101 Japan Site area: 98,512 square meters Employees: 383 Production model: Rail vehicles, vehicles for new traffic, rotary snowplows, scatterers, special work vehicles			

Overview / Products and Services

Niigata Transys Co., Ltd. merged with the former company Niigata Engineering Co., Ltd. and the rolling stock department of Fuji Heavy Industries Co., Ltd.(now SUBARU Corp.) was founded in the year of 2003. Niigata Transys Co., Ltd. being the top share of diesel cars as the core business of the rolling stock and his product ranges are widely a new transit system, low floor trams, maintenance cars and snowplows which are being utilized in snowy areas and also indispensable to daily life and safety operation and has been experienced widely and broadly.

His technologies and know-hows fostered based on many experiences have been accepted extensively not only in Japan but also overseas.

New transit systems having interior comfortability, enhancement of maintainability of vehicles and adopting latest technology have been being operated in Hong Kong International Airport and Taiwan Taoyuan International Airport in order to facilitate movement of airport passengers and to support ground staff there.

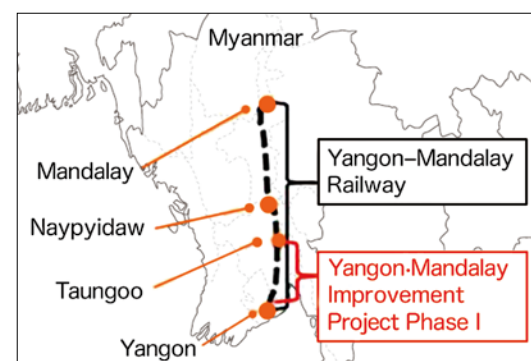
24 cars of Diesel Electric Multiple Units (DEMU) for Yangon-Mandalay Railway Improvement Project Phase 1 - electricity generated by diesel engines drives motors - were ordered from Niigata Transys Co., Ltd. by Myanmar Railways in 2018 and delivered in 2022. It takes 7 hours approximately to go from the biggest commercial city-Yangon to Taungoo, but it will take 3 hours 20 minutes after commercial operation of DEMU. DEMU will solve mitigation of a traffic problem and contribute to development of socioeconomics by mitigation of burden of Myanmar's people's transit. Niigata Transys Co., Ltd. will contribute to helping economical development in Asian countries.



at Trial run line in Niigata factory



New transit system vehicles for Hong Kong International Airport



24 units of DEMU will run between Yangon and Taungoo, and its distance is 267km.



Company Profile

https://www.n-sharyo.co.jp/index_e.html

Company Name	NIPPON SHARYO, LTD.		
Representative	Mamoru Tanaka President and Chief Executive Officer	Capital	JPY 11,810 million *
Established	September 18, 1896	Total Assets	JPY 124,363 million *
Employees	2,321 (As of March 31, 2023)	Net Assets	JPY 51,123 million *
Head Office	1-1, Sanbonmatsu-cho, Atsuta-ku, Nagoya 456-8691 Japan	Net Sales	JPY 97,969 million *
Manufacturing Facilities, Branches and Subsidiaries	Toyokawa Plant, Kinuura Plant, Narumi Plant		

* : Consolidated, as of March 2023

Overview

For the last 120 years Nippon Sharyo has been the leader in the field, ever since it was established as a railway rolling stock manufacturer in 1896. The company expanded its business into the areas of construction equipment, steel structures, transportation equipment, and agricultural plants in the 1960's. Even in recent years, we've never lost the appetite for the new opportunities that meet the ever-changing market needs.

Products and Services

Exported Vehicles

Nippon Sharyo has been delivering various vehicles for global market with satisfactory evaluations for quality, safety and reliability. To date, our experiences expanded widely, including super high speed trains, urban and suburban trains, and metro and light rail transit vehicles.



Indonesia, EMU for MRT Jakarta



Venezuela, Caracas Suburban EMU for Venezuela State Railway



Canada, DMU for Metrolinx



Taiwan, Model 700T Super-express EMU for Taiwan High Speed Rail Corporation



Philippines, LRV for Light Rail Transit Authority of Manila



USA, Gallery Type Bi-Level Passenger Car for METRA



Company Profile https://www.fujielectric.com/products/electric_railways

Company Name	Fuji Electric Co., Ltd.		
Representative	Shiro Kondo President and COO	Capital	JPY 47.6 billion *
Established	August 29, 1923	Total Assets	JPY 1,181.6 billion *
Employees	27,123 (Consolidated)	Net Sales	JPY 1,009.4 billion (Consolidated) *
Head Office	Registered Address: 1-1, Tanabeshinden, Kawasaki-ku, Kawasaki-shi, Kanagawa 210-9530, Japan Head Office: Gate City Ohsaki, East Tower, 11-2, Osaki 1-chome, Shinagawa-ku, Tokyo 141-0032, Japan		
Manufacturing Facilities, Branches and Subsidiaries	Suzuka Factory, Chiba Factory, Tokyo Factory, Virginia Factory of Fuji Electric Corp. of America, Fuji SEMEC Inc.		

* : As of March 31, 2023

Overview

Since 1923, Fuji Electric has continued to supply a-state of art products of the energy distribution / conversion and has contributed widely in the fields of industrial and social infrastructure. Based on the technology and experience we have cultivated so far, we will pursue innovations in energy and environmental technologies, enhance operational value on customer's system and continuously produce environment-friendly products and systems. Fuji Electric has handled a wide range of railway facilities and equipment over half a century. We will continue to make a significant contribution on a daily basis," the stable, safe and comfortable operation" of the environmentally friendly railway systems.

- Power semiconductor
- Propulsion System for rolling stock
- Auxiliary Power Supply (APS)
- Electric Door Operator
- Substation Equipment for Electric Railways
(Transformer, Rectifier, Switchgear, Regenerative power absorbing Equipment, etc.)

Products and Services

■ Propulsion System for Rolling Stock

Fuji developed a product with a SiC power semiconductor module and a running air cooling system, which reduces the size and weight of cars. For shinkansen motors, transformers and main converters are manufactured together, the tests for performance evaluation and the long-term running durability are being performed.

■ Auxiliary Power Supply and Door Operator for Rolling Stock

Auxiliary Power Supplies and Door Operators are supplied to domestic and overseas railway and Car-Builders. Our local affiliated company, Fuji SEMEC, achieved the local production and maintenance services in North America. FCPM Door Operators for Japan and Asia achieves excellent door obstacle detection capability, high-speed response and high reliability with a direct driven system using a Rack and Pinion mechanism.



JR Central/ Series N700S Prototype Car



Tokyu Railway/ Series 2020 Car

Company Profile <https://www.mitsubishielectric.com/en/worldwide/index.html>

Company Name	MITSUBISHI ELECTRIC CORPORATION		
Representative	Kei Uruma President & CEO	Capital	JPY 175,820 million *
Established	January 15, 1921	Total Assets	JPY 5,582,519 million *
Employees	149,655 *	Net Assets	JPY 3,363,224 million *
Head Office	Tokyo Building, 2-7-3, Marunouchi, Chiyoda-ku, Tokyo 100-8310, Japan		
Manufacturing Facilities, Branches and Subsidiaries	Transportation systems manufacturing bases: Itami, Kobe, Nagasaki, USA, Mexico, Australia, China, Italy, India etc. More than 200 companies in 40 countries around the world (Company-wide)		

* : Consolidated, as of March 31, 2023

Overview

Mitsubishi Electric is committed to contribute to society and daily life around the world, as a leader in the manufacture and sales of electric and electronic products and systems used in a broad range of applications. From 1922, the next year of its foundation, Mitsubishi Electric has been an equipment supplier for railway systems to realize powering, braking, controlling and comfort functions by a single company, as well as a system integrator providing total support for transportation systems with extensive knowledge gained through past projects. Mitsubishi Electric has supplied its railway equipment for 59,000 cars in 36 countries (as for March 31, 2023), and will continue to deliver tomorrow's world of mobility with cutting-edge transportation solutions.

Products and Services

Mitsubishi Electric provides various products with high quality and reliability to support safe and comfortable train operation in the world.





Company Profile

<https://www.global.toshiba/ww/company/infrastructure>

Company Name	Toshiba Infrastructure Systems & Solutions Corporation		
Representative	Takayuki Konno President and CEO	Capital	JPY 10 billion
Established	July 1875 (Founded) July 1, 2017 (Split off from Toshiba Corporation)	Net Sales	JPY 693.2 billion (FY 2022, Consolidated)
Employees	19,900 (Consolidated, as of March 31, 2022)		
Head Office	72-34, Horikawa-cho, Saiwai-ku, Kawasaki-shi, Kanagawa, 212-8585 Japan		
Manufacturing Facilities, Branches and Subsidiaries	28 domestic corporations & 35 overseas corporations (excluding Toshiba Infrastructure Systems & Solutions Corporation)		

Overview

Development, manufacturing and sales of social infrastructure business products, systems and services

Products and Services

Railway Transportation Systems for a Comfortable Future.

The Railway System Division, in its commitment to future progress, has consistently achieved technological breakthroughs on three systems that are shaping the future worldwide: rolling stock systems, power supply systems, and information systems.

We have been working to better meet the requirements of railway transportation, such as environmental adaptability, safety, punctuality, comfort, and reliability.



Train Control Monitoring System



Hybrid Locomotive



VVVF Inverter



Lithium Ion Battery SCiB™ Module



Traction Motor



Company Profile

<https://www.toyodenki.co.jp/en/>

Company Name	TOYO DENKI SEIZO K.K.		
Representative	Akira Watanabe President	Capital	JPY 4,998 million *
Established	June 20, 1918	Total Assets	JPY 49,682 million *
Employees	1,149 (Consolidated)	Net Assets	JPY 24,582 million *
Head Office	Tokyo Tatemono Yaesu Building 5F 1-4-16, Yaesu, Chuo-ku, Tokyo, 103-0028, Japan		
Manufacturing Facilities, Branches and Subsidiaries	Yokohama Plant, Shiga Ryuo Plant Domestic: 5, Overseas: 8 (US 1, China 6, Thailand 1)		
		Net Sales	JPY 31,025 million *
		Operating Income	JPY 517 million *

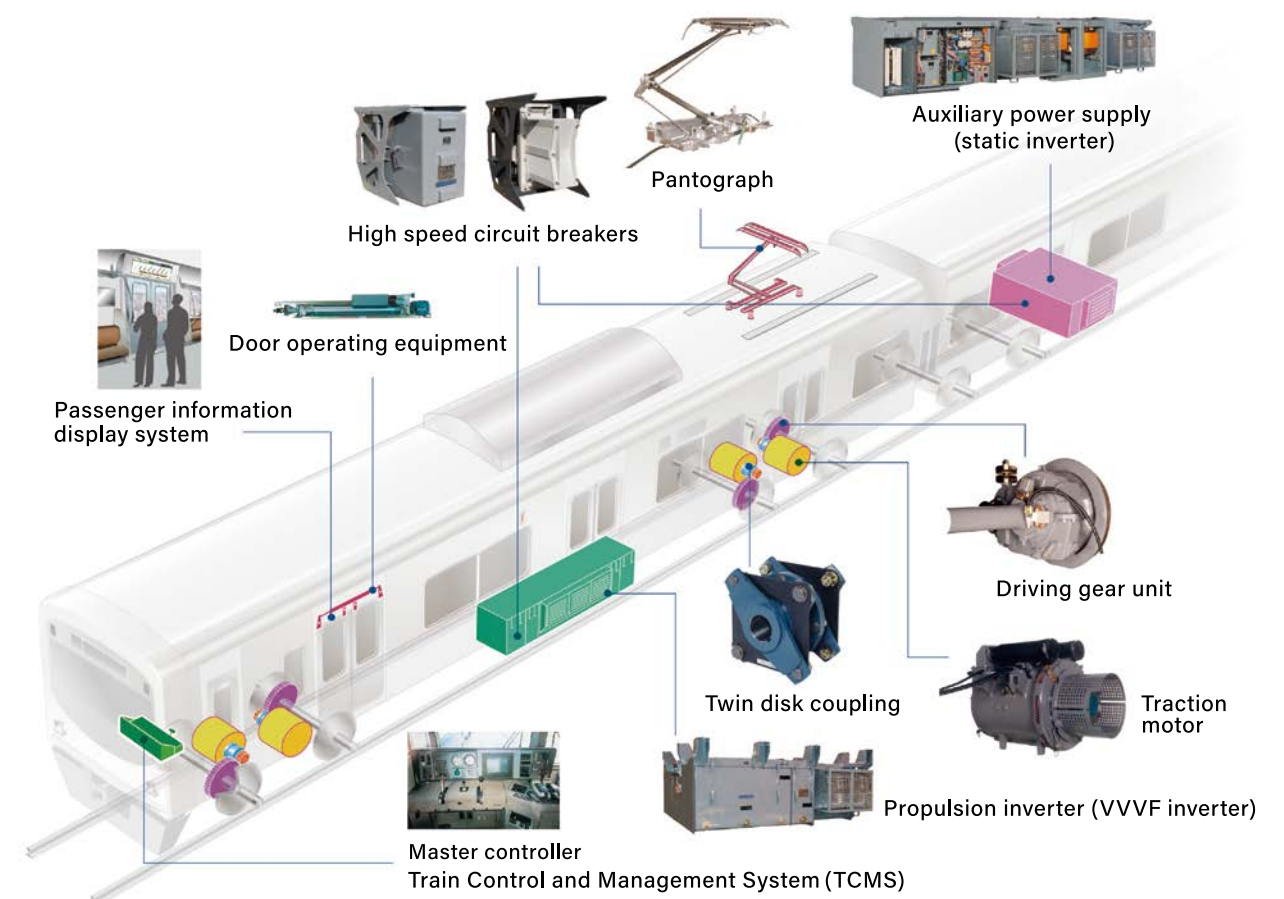
* : Consolidated, as of May 2023

Overview

Toyo Denki was established in 1918 to manufacture electrical equipment for trains in Japan. Ever since, we have worked to create products that deliver the safety and reliability required for railway applications in the world. In June 2018, we marked our 100th year in business.

Our solutions include Traction Motor, Driving Gear, and Propulsion Inverter System, as well as Cab Peripheral Equipment, Door Operating Equipment, and Pantographs etc. By manufacturing these solutions, Toyo Denki helps to secure the safety and reliability of public transportation.

Products and Services





Company Profile

<https://www.kyosan.co.jp/english/>

Company Name	Kyosan Electric Manufacturing Co., Ltd.		
Representative	Ryoji Kunisawa Representative Director, President, CEO	Capital	JPY 6,270.3 million *
Established	September 3, 1917	Total Assets	JPY 114,360 million *
Employees	2,098 *	Net Assets	JPY 46,245 million *
Head Office	29-1, 2-chome, Heian-cho, Tsurumi-ku, Yokohama City, Kanagawa 230-0031 Japan	Net Sales	JPY 72,327 million *
		Operating Income	JPY 2,207 million *
Manufacturing Facilities, Branches and Subsidiaries			
Head Office and Factory: Tsurumi-ku, Yokohama		Zama Factory: Zama, Kanagawa	
Tokyo Office: Minato-ku, Tokyo			
Overseas Office: Taiwan (New Taipei), Beijing		Local subsidiaries: USA, Taiwan, China, India, Poland	

* : Consolidated, as of March 31, 2023

Overview

Since established in 1917, We have developed Relay, Automatic block signaling device, ATS device, Signaling system for medium distance transit systems (for unattended train operation), Gap Filler for platform safety system. We are going forward as a leading signaling company based on the themes of "Safety" and "Reliability". We expanded our business to "Platform Safety Equipment" and "Information Systems", as well as the core areas of "Railway Signaling Solutions", to contribute social development and improve comfort.

Recent Achievement of Exporting Our Products

- Signaling system for Harbin Metro Line 1 in China
- CBTC System for Orlando and Tampa International Airport APM
- Electric Interlocking System for Indian Railway (more than 700 stations)
- Signaling system for Taiwan High Speed Rail
- CBTC System for Macau LRT

We continue to contribute to the world for the future with our solid performance and wealthy imagination. We create safety, reliability and kindness for people and environment.



CBTC System for Orlando International Airport APM



Electric Interlocking System



Total Train Control System (TTC) Operation Control Center



Platform Safety System (Platform Screen Door)

Company Profile

<https://english.signal.co.jp>

Company Name	NIPPON SIGNAL CO., LTD.		
Representative	Hidehiko Tsukamoto President, CEO and COO	Capital	JPY 10 billion (As of March 21, 2023)
Established	December 27, 1928	Total Assets	JPY 146,019 million *
Employees	2,987 (Consolidated, as of March 31, 2023)	Net Assets	JPY 89,351 million *
Head Office	1-5-1, Marunouchi, Chiyoda-ku, Tokyo 100-6513, Japan	Net Sales	JPY 85,456 million *
		Operating Income	JPY 5,112 million *
Manufacturing Facilities, Branches and Subsidiaries			
Domestic: Kuki Plant (Saitama prefecture), Utsunomiya Plant (Tochigi prefecture), 1 Branch and 20 Subsidiaries			
Overseas: 3 Branches (Taiwan, Bangladesh, Myanmar) and 4 Subsidiaries (China, India, Bangladesh, Taiwan)			

* : As of March 2023

Overview / Products and Services

Over the 90 years, NIPPON SIGNAL has been providing services and solutions for transportation infrastructure as the world-leading one-stop solutions provider.

Railway Signal Systems

- Total system design and supplying equipment.
- NIPPON SIGNAL CBTC "SPARCS"

AFC Systems

- Providing everything necessary for smart card system operations from media to terminals (e.g. PG, TVM).

Platform Safety Systems

- Providing flexible PSD solution suitable for operation.

Examples of On-going Project

- Cairo Metro Line 4, Egypt (Railway signalling, PSD)
- Metro Manila Subway Project, Philippines (Railway signalling)
- Delhi Metro Magenta Line Extension Corridor, India (Railway signalling)
- Dhaka MRT Line-6, Bangladesh (Railway signalling・AFC・PSD)
- Red Line, Thailand (Railway signalling・AFC)
- Gimpo Goldline, Gwangju Metropolitan Rapid Transit Line No.2, Rep. of Korea (Railway signalling)
- Taiwan High Speed Rail, Taiwan (Railway signalling)
- Myanmar Railways, Myanmar (Railway signalling)
- Argentine Railways, Argentina (Railway signalling)
- Line 1 of the Ho Chi Minh Urban Railway, Vietnam (AFC)



* ATP: Automatic Train Protection
* ATS: Automatic Train Supervision
* CBTC: Communications-Based Train Control system

* AFC: Automatic Fare Collection
* PG: Passenger Gate

* TVM: Ticket Vending Machine
* PSD: Platform Screen Door

Examples of Supply record



MRT Jakarta, Indonesia; AFC system



Magenta Line (Delhi Metro), India; Railway signalling system, CBTC etc.



Company Profile

<https://www.combiwith.co.jp/english/>

Company Name	CombiWith Corporation		
Representative	Yasushi Matsuura President & CEO	Capital	JPY 30 million
Established	May 1, 1982		
Employees	354 (As of January 1, 2023)		
Head Office	2-6-7 Motoasakusa, Taito-ku, Tokyo, 111-0041 Japan		
Manufacturing Facilities, Branches and Subsidiaries	Domestic: West Japan Sales Office		

Overview

Outing Environment Supporting Business

CombiWith is continuously developing products that provide a safe outing environment for caregivers and children, such as diaper changing station, hot water dispenser for bottle feeding and chair for breastfeeding. Leveraging our track record and expertise, we provide commercial-use childcare products and services for creating comfortable childcare from a broader perspective.

Childcare Services

Based on our corporate philosophy of supporting parenting families to go outside, we provide childcare services for infants and young children according to the Child Welfare Law. We will broadly support parenting by enhancing a variety of systems that provide peace of mind and space for precious children.



Products and Services

Standard feature for Shinkansen series 700N and other major long distance and regional trains



Combi Changing Station MS BS-W58 (L) / (R)

- Compact size, lightweight, suitable for small toilet booth
- MS can be installed to existing toilets with handrails and Baby Keep installed.
- One-hand operation, Easy Belt
- Wall on 3 sides prevents child from sliding



Reference Only:
Image of Baby Keep Slim with foot

Combi Baby Keep Slim BK-W65

- Only 98mm depth when it is folded (280mm when it is opened)
- Original seat design makes it easier to set the child but difficult for the child to escape.
- Replaceable shock absorbing Pad
- Can be installed on both flat wall or corner (Corner bracket sold separately)



Combi CHANGING BOARD CB13

- Open or close without touching floor
- Not to get soiled easily and easy to clean
- Soft-down mechanism for slow opening and closing
- Non-slip step design
- Can be installed in existing toilet booth
- Four languages (Japanese, English, Chinese and Korean)



Company Profile

<http://www.d-cast.jp>

Company Name	DAIDO CASTINGS CO., LTD.		
Representative	Hajime Takahashi President and CEO	Capital	JPY 2,215 million
Established	April 1, 2002	Net Sales	JPY 16,396 million (As of March 31, 2023)
Employees	474 (As of March 31, 2023)		
Head Office	10 Ryuguchō, Minato-ku, Nagoya City, Aichi, 455-0022, Japan		
Manufacturing Facilities, Branches and Subsidiaries	Nagoya Business Unit, Nakatsugawa Business Unit, Tokyo Sales Office, Nagoya Sales Office, Fukuoka Sales Office		

Overview

Daido Castings' Manganese Crossing has a history of over 100 years. Until the 1980s, we have had experience exporting the crossing to countries in southeast Asia in the past, including China, Thailand, Indonesia, Taiwan, North America, Australia, Europe, and Africa. However, since then, we have mainly focused more on sales in the domestic market and improvements on QCDS. Then, in 2002, we separated from Daido Steel as a subsidiary company specializing in the casting of steel products. And for the last 10 years, we have participated in an ODA-based railway infrastructure export project organized around the Japanese government, thus, increasing the number of indirect export. Our goal in the future is to approach new customers overseas and export our products directly to them. We aim to continuously contribute to world social prosperity by rapidly progressing to new markets.

Products and Services

1 The Cast Manganese Steel crossing

High manganese steel has the characteristic that while its surface hardens during machining, it maintains its internal toughness. This characteristic is utilized in the manganese crossing, resulting in a product with excellent wear resistance, impact resistance, and crack propagation resistance. We use the organic self-hardening molding method for individual shapes, and the V process method for mass production.



Rigid crossing
(sand casting)



Near the Toyokawa Railway Bridge
when the Tokaido Shinkansen opened



Movable nose crossing for Shinkansen
(JR Takasaki Station)

2 Centrifugal Casting

Molten metal is poured into a rotating mold and solidified by centrifugal force. We manufacture a wide range of steel types, from carbon steel to high alloy. It has excellent properties such as a dense structure and few defects such as slag inclusions.



Ironmaking parts
(centrifugal casting)



Turbocharger parts
(precision castings, DLCC castings)

3 Precision casting/DLCC casting

Using our unique vacuum suction casting method, we produce precision castings and DLCC castings with thin walls and complex shapes. We mainly mass produce heat-resistant parts such as wheels and housings for turbochargers using automated equipment and export them all over the world.



Company Profile

<https://www.furukawadenchi.co.jp/english/>

Company Name	The Furukawa Battery Co., Ltd.		
Representative	Osamu Kuroda President and CEO	Capital	JPY 1,640 million *
Established	September 1, 1950	Total Assets	JPY 63,278 million *
Employees	2,391 (Consolidated) * 1,068 (Single) *	Net Assets	JPY 34,947 million *
		Net Sales	JPY 69,538 million *
		Operating Income	JPY 1,900 million *
Head Office	2-4-1 Hoshikawa, Hodogaya-Ku, Yokohama City, Kanagawa 240-0006, Japan		
Manufacturing Facilities, Branches and Subsidiaries	Railway battery production base: Iwaki Works 10 domestic sites (6 sales companies) / 2 overseas sites		

* : As of March 31, 2023

Overview

Furukawa Battery has been manufacturing and selling storage batteries and power supply products for more than a hundred years. Using the technical expertise we have accumulated in each business, we continually fulfill the expectations of customers and society. This is a point of pride for us at Furukawa Battery. Our Railway storage batteries have about 55% share of the domestic market *our estimate.

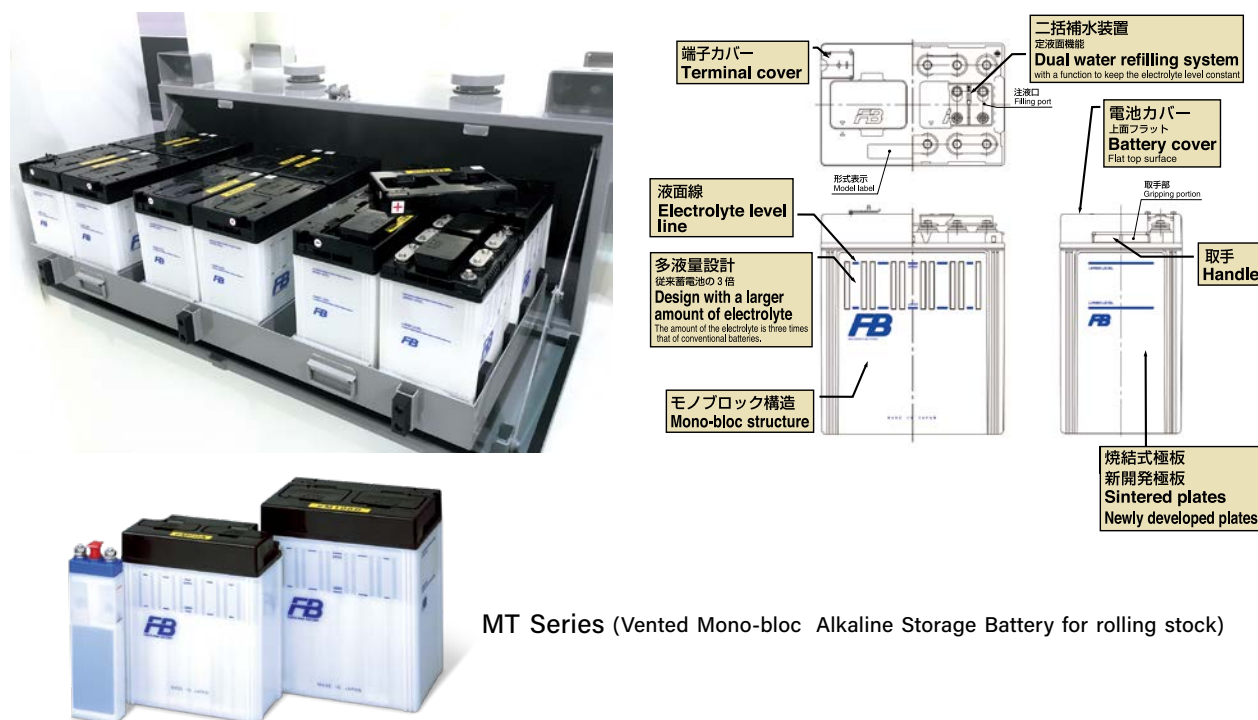
We have started collaborating with overseas manufacturers since 2005. Until now, we have valued a good relationship with our business partners and, have been working to expand the market share of our partners. "Abundant experience in Japan and cooperation with overseas manufacturers."

We Furukawa battery are convinced of that these two our advantages will pave the path to big overseas markets.

market share of Batteries
for Rolling Stock in domestic market
* our estimate



Products and Services



Company Profile

<http://www.hayashisoji.com/en/>

Company Name	Hayashi Soji Corporation		
Representative	Kennosuke Hayashi President	Capital	JPY 20 million
Established	May 1, 1981	Net Sales	JPY 1,500 million (As of March 31, 2019)
Employees	41 (Consolidated)		
Head Office	5-12-14 Omori Higashi, Ota-ku, Tokyo, 143-0012 Japan		
Manufacturing Facilities, Branches and Subsidiaries	Head office plant: 5-12-14 Omori Higashi, Ota-ku, Tokyo Ichihara Works: 4-3 Uruido Minami, Ichihara City, Chiba, Nagoya Sales Office		

Overview

Total manufacturer of signal and safety equipment for railways

With a keen awareness of the important role played by signal and safety equipment for railways, we, Hayashi Soji Corporation are constantly working to develop new technologies. The excellent performance of a diverse range of equipments and devices that we have developed by the application of novel technologies is making a real contribution to railway safety.

Main Products

- Railway signal safety equipment
- Track maintenance equipment
- Turnout components
- Signal maintenance equipment
- Track components for civil engineering

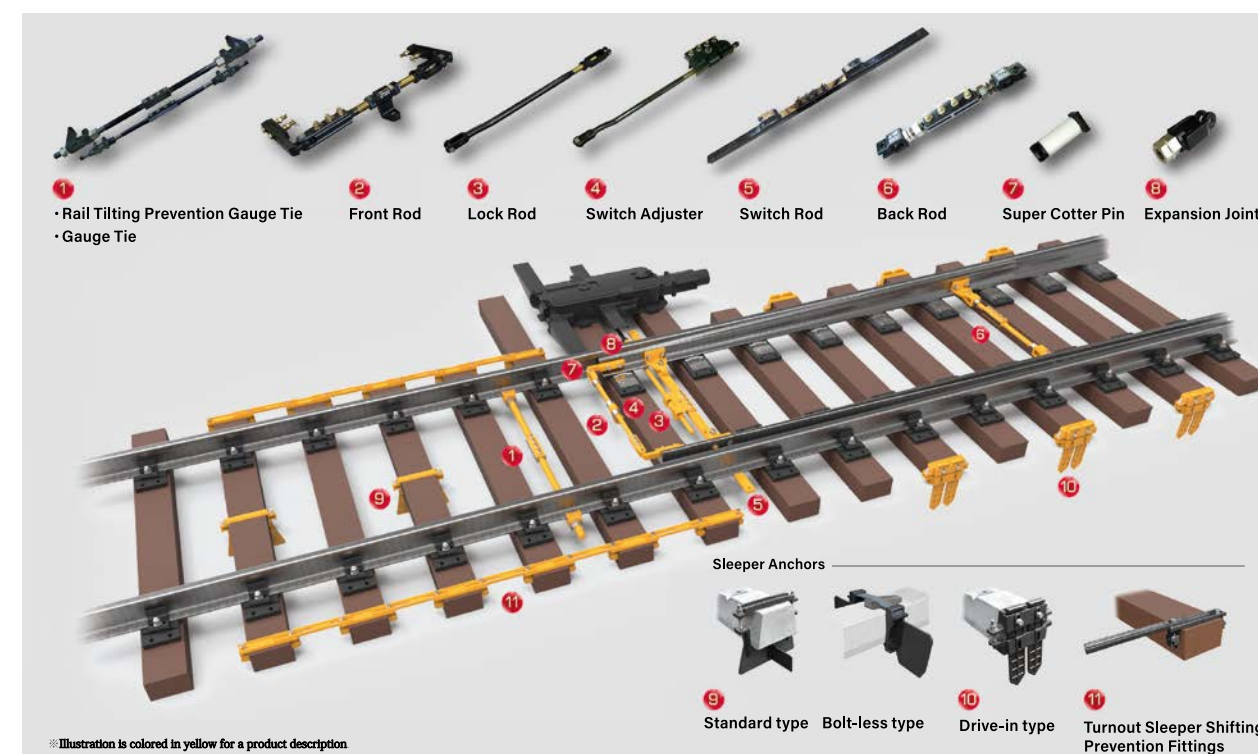


Sleeper anchor for South Africa



Installation of sleeper anchor in South Africa

Products and Services





Company Profile

<https://www.hitachi-nico.jp/en/>

Company Name	Hitachi Nico Transmission Co., Ltd.		
Representative	Masanori Katayama President	Capital	JPY 450 million
Established	April 1, 2003 [Formerly Niigata Converter Co., Ltd. (1952)]	Net Sales	JPY 15.7 billion (As of March 31, 2023)
Employees	536		
Head Office	405-3 Yoshinocho 1-chome, Kita-ku, Saitama, 331-0811 Japan		
Manufacturing Facilities, Branches and Subsidiaries	Factory : Omiya Plant (Saitama-Prefecture), Kamo Plant (Niigata-Prefecture) Office : Saitama (For overseas), Osaka, Sapporo, Fukuoka		

Overview

Since 1952 when our predecessor company "Niigata converter" started operation, we extensively have contributed to society through our products for mainly Japanese railway business. Our products for railways are Power-shift transmission, Final drive gearbox and etc for DHMU, DHL, and working vehicles by diesel engine drive. In the history of about 70 years, our products have not only been adopted with a high share in the domestic market, but also for all over the world(Asia, Oceania, Europe, South America and etc). We continue efforts to develop the rail industry around the world by supplying our optimal products in accordance with customer's requirements and regional characteristics in its operating areas.

Products and Services

Power-shift Transmission [TACN-series]

【Feature】 Underfloor installation
【Application】 DHMU or Working vehicle
【Range】 Approx. 180~600kW
【Remarks】 High-efficiency (Direct-clutch)



Power-shift Transmission [TDCN-series]

【Feature】 Drop box-type
【Application】 DHL or Working vehicle
【Range】 Approx. 100~1000kW
【Remarks】 Easy-to-mount PTO



Topics・Characteristic examples

- No.1 share in Japanese market (DHMU)
 - "HAST" World's first Parallel Hybrid Transmission for railways
 - Hybrid transmission
TACHN : Underfloor installation
TDCHN : Drop box-type
 - Use for special purpose vehicle
Multiple tie tamper, Rail carrier, Catenary maintenance vehicle, etc.
- 【Various options】
Special products in accordance with customer's requirements
PTO, Multiple-disc brake, Hydraulic retarder brake, Constant speed control



Working vehicle (China) :
Hybrid transmission "TACHN" Installed

Company Profile

<https://www.kre-net.co.jp>

Company Name	KINTETSU RAILCAR ENGINEERING CO., LTD.		
Representative	Ichirou Maeda President	Capital	JPY 90 million
Established	June 10, 1957		
Employees	300		
Head Office	Kintetsu Uehommachi Ishigatsuji Building 7F, 4-13, Ishigatsujicho Tennoji-ku, Osaka, 543-0031 Japan		
Manufacturing Facilities, Branches and Subsidiaries	Planning and Development Division Office: 10-1, Amagatsuji-Kitamachi, Nara city, Nara 630-8025 Yamamoto Works: 5-11-28 Yamamotocho Minami, Yao City, Osaka 581-0013		

Overview

Kintetsu Railcar Engineering Co., Ltd. (KRE) has grown over a period exceeding 60 years by conducting car renewal and modification works, and by providing related facilities and parts. The company's Planning and Development Department, originated by the railway technical research institute of Kintetsu Railway, has been developing and providing innovative systems and facilities for railway operators. We have customers all over Japan and also in some other countries. We continue to develop products incorporating customers' needs and to conduct support works in the future as well, with our wealth of experience in the railway industry and cutting-edge technology. We are also ready to make contribution with our overseas customers by not only supplying them with facilities and parts, but also providing them with support or consulting on railcar maintenance.

Products and Services

【Main products】

- **Train Navi (Driver Support System)** indicates what actions the driver should take in accordance with train location. Optional functions using duplex communication are also available.
- **Multilingual Public Address System** provides onboard multilingual broadcasting using tablet. GPS control and in-station PA are optional.
- **Wheel Flat Detection System** detects and reports wheel defects such as a flat automatically. It can record the location and degree of defects on a wheel-by-wheel basis, making the scheduling of wheel truing easy.



Train Navi (Driver Support System)



Multilingual Public Address System



Wheel Flat Detection System



Railcar Rehabilitation



Company Profile

<https://www.nabtesco.com/en/>

Company Name	Nabtesco Corporation		
Representative	Kazumasa Kimura Representative Director, President & CEO	Capital	JPY 10 billion
Established	September 29, 2003	Total Assets	JPY 459.3 billion *
Employees	Non-consolidated: 2,390 * Consolidated: 7,928 *	Net Assets	JPY 263.2 billion *
		Net Sales	JPY 308.7 billion *
		Operating Income	JPY 18.1 billion *
Head Office	JA Kyosai Bldg., 7-9, Hirakawacho 2-chome, Chiyoda-ku, Tokyo 102-0093, Japan		
Manufacturing Facilities, Branches and Subsidiaries	Railroad Products: Japan (Kobe), China (Jiangsu), Italy (Piemonte) Domestic: 14 companies, Overseas: 50 companies *		

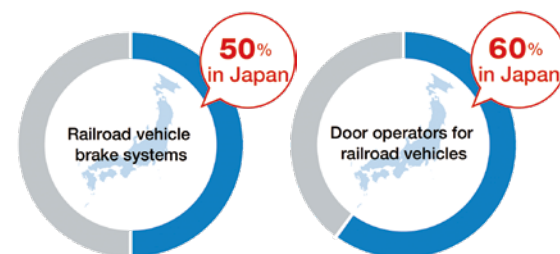
* : As of December 31, 2022

Overview

Nabtesco Corporation was formed in 2003 through the merger of NABCO Ltd. (established in 1925, formerly Nippon Air Brake Co., Ltd.) and Teijin Seiki Co., Ltd. (established in 1944).

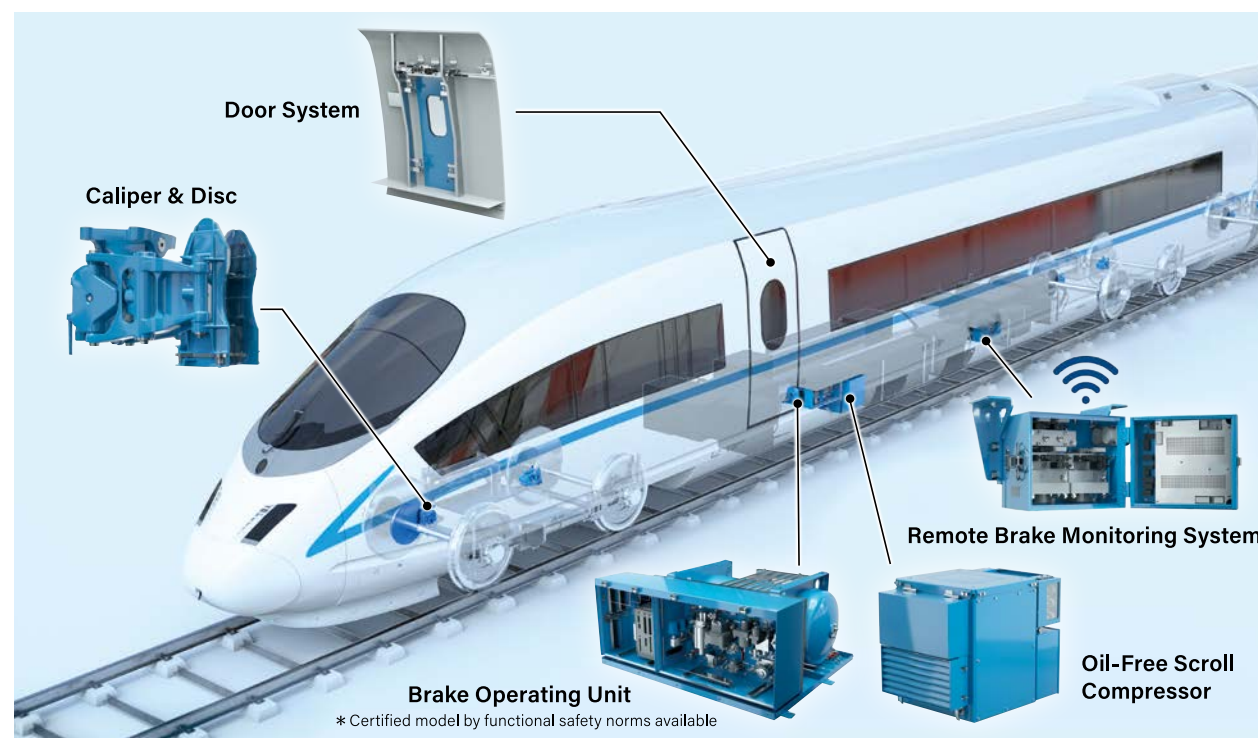
Market Share

We supply brake systems and door operating units (our main product lines), various test equipments, brake shoes, seat turning equipments, snow removal devices at turnout, and other products to domestic and overseas railroad markets. In Japan, we have a roughly 50% market share for brake systems and a roughly 60% share for door operating units. Of particular note, Nabtesco's door operators are installed on all carriages of the Shinkansen.



source: Estimated by Nabtesco

Products



Company Profile

<https://www.najico.co.jp/en>

Company Name	NAKAMURA JICO CO., LTD.		
Representative	Hiroki Nakamura President and Representative Director	Capital	JPY 315 million
Established	June 14, 1947	Net Sales	JPY 17.5 billion (As of December, 2022)
Employees	166 (As of December, 2022)		
Head Office	3-10-10, Tsukiji, Chuo-ku, Tokyo, 104-8431 Japan		
Manufacturing Facilities, Branches and Subsidiaries	Main factory: 1 (Takahagi City, Ibaraki), Logistics base: 1 (Moriya City, Ibaraki) Domestic sales bases: 11 (Sapporo, Sendai, Niigata, Tokyo, Nagoya, Osaka, Yonago, Hiroshima, Okayama, Shikoku, Fukuoka) Overseas sales bases: 2 (Beijing, Singapore)		

Overview

Since our establishment in 1929, we Nakamura Jico Co., Ltd., have been selling rolling stock parts, maintenance machines and equipment for railway companies across Japan including Japan Railways Group. Our service items include our manufactured products Universal Joint and Heat Exchanger as well as Bogie Parts, Underfloor Device, Interior Parts such as Diesel Engine, Transmission, Oil Damper, Announcing Device which we sell as agent of equipment manufacturers.

We also supply rolling stock parts to abroad. We mainly export diesel rolling stock parts to China, Korea, Myanmar, Southeast Asia and Latin America region.

We will offer a wide range of quality and value for customer's various issues by wide range of product lineup and our knowledge and experiences obtained in Japanese market.



Diesel Power Unit (DPU)



Universal joint



Heat exchanger



Rolling stock parts



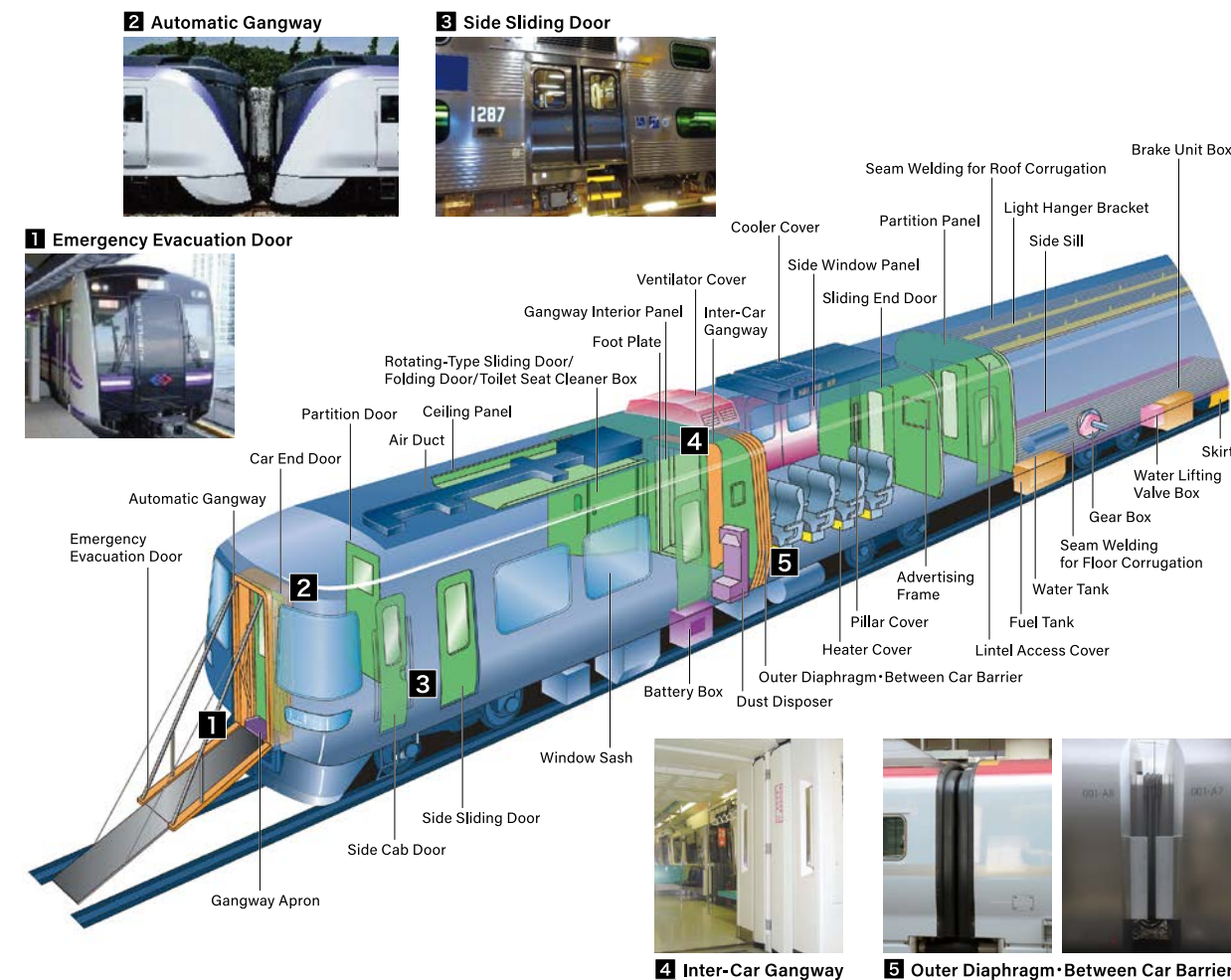
Company Profile

<https://www.narita.co.jp/en/>

Company Name	NARITA MFG., LTD.		
Representative	Shuichi Narita President and CEO	Capital	JPY 64 million (fiscal 2018)
Established	October 15, 1938		
Employees	249		
Head Office	20-12 Hanaomotecho, Atsuta-ku, Nagoya, Aichi 456-0033 Japan		
Manufacturing Facilities, Branches and Subsidiaries	HQ & Main Plant (Atsuta-Ku, Nagoya-City), Mito Plant (Toyokawa, Aichi) and three other locations NARITA USA MFG., INC (IL, U.S.A.)		

Overview

We specialize in manufacturing assemblies and parts of Rolling Stock Gangways and Doors, and Motorcycle Fuel Tanks. In response to the wide-ranging needs of our customers, we've created new products with our unique patented technology. We started manufacturing Locomotive Door Hinges at our company establishment. In 1943, we were licensed to be a supplier to Ministry of Railways currently as Japan Railways Group (JR). Since then, we have created Gangways and the related parts for Shinkansen and Intercity express trains, and Auto-coupling Gangway Systems. Now, not only JR and other public and private railways in Japan enjoy our products but also overseas railways such as Metro in NY and Singapore, and suburb trains in Chicago. As a Gangway system manufacturer, we continue to deliver top-notch products at any time while listening to our customers.



Company Profile

<https://www.ns-jcw.co.jp/en/>

Company Name	Nihon Sharyou Senjouki Co., Ltd.		
Representative	Naohiro Masuda President & CEO	Capital	JPY 45 million
Established	March 8, 1956		
Employees	60		
Head Office	1-29-4 Chuo, Edogawa-ku, Tokyo 132-0021 Japan		
Manufacturing Facilities, Branches and Subsidiaries	Factory : Tokyo / Belgaum, Karnataka, INDIA Branches: Sapporo City / Sendai City / Niigata City / Tokyo / Osaka City / Kagawa / Fukuoka City / Kagoshima City / Jakarta / New Delhi		

Overview

The first washing machine manufacturer in Asia. We design, manufacture, construct, and maintain cleaning equipment from passenger cars to aircraft. The main handling equipment is Train body washing machine, Bogie washing machine, Bearing washing machine, Parts washing machine, Wastewater treatment equipment, and Ro water generator. In recent years, we have designed, manufactured and installed equipment such as Jakarta MRT washing machine, Hong Kong international Airport washing machine, and Manila LRT washing machine.

Products and Services



Washing system for Jakarta Mass Rapid Transit



Washing system for Hong Kong International Airport



Bogie washing system



Bearing washing system



Company Profile

<https://www.nipponsteel.com/en/>

Company Name	NIPPON STEEL CORPORATION		
Representative	Eiji Hashimoto Representative Director and President	Capital	JPY 419.5 billion *
Established	October 1, 2012	Total Assets	JPY 9,567 billion *
Employees	106,068 (As of March 31, 2023)	Net Assets	JPY 4,646.4 billion *
Head Office	2-6-1 Marunouchi, Chiyoda-ku, Tokyo 100-8071, Japan	Net Sales	JPY 7,975.5 billion *
		Operating Income	JPY 883.6 billion *
Manufacturing Facilities, Branches and Subsidiaries			
Osaka Steel Works (Konohana-ku, Osaka City/Main plants for railway products)			
Domestic: 14 manufacturing bases			
Global expansion: Expand offices and manufacturing bases in 18 countries worldwide (As of March 31, 2023)			

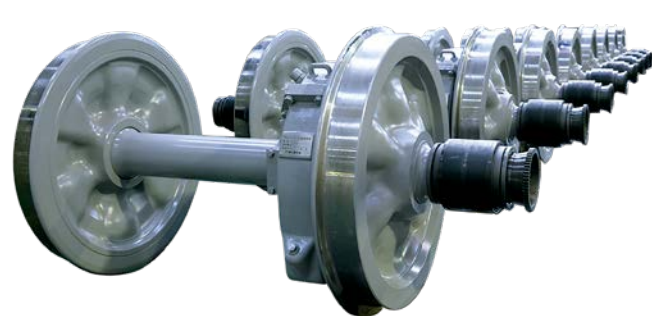
* : Consolidated, as of March 31, 2023

Overview

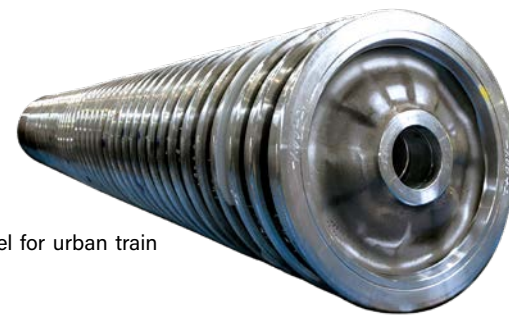
With manufacturing bases in Japan and 15 countries or more worldwide, Nippon Steel Corporation is Japan's largest steelmaker and one of the world's leading steel producers. With the aim of continually growing to become the "best steelmaker with world-leading capabilities," we will pursue world-leading technologies and manufacturing capabilities and contribute to society by providing excellent products and services. We are the only manufacturer of railway wheels in Japan. By providing high-quality wheels for many years, we have won the trust and high esteem of customers. Our new technologies are highly regarded at home and abroad, and our wheels are widely used throughout the world.

Products and Services

High-speed railway wheels need to withstand train speeds of more than 300 km/h, and subway and urban train railway wheels face increasingly severe use conditions attributable to higher acceleration and braking performances of trains. NSC produces railway wheels employing world's highest level cleanliness steel and advanced hot-forming, processing and inspection technologies. These wheels with long record of actual results has acquired high reliability from railway companies overseas.



Wheel and Axle with gear unit



Wheel for urban train



Axle



Wheel and Forged Steel Brake Disc for Shinkansen

Company Profile

<https://www.nkkswitches.com>

Company Name	NKK SWITCHES CO., LTD.		
Representative	Tomoshige Ohashi President & CEO	Capital	JPY 951 million
Established	December 11, 1953	Net Sales	JPY 10,320 million *
Employees	288 *		
Head Office	715-1 Unane, Takatsu-ku, Kawasaki-shi, Kanagawa 213-8553 Japan		
Manufacturing Facilities, Branches and Subsidiaries			
Domestic Sales office: Nagoya, Osaka, Fukuoka Manufacturing Subsidiary: 1, Overseas Subsidiaries: 6			
* : Consolidated, as of March 31, 2023			

* : Consolidated, as of March 31, 2023

Overview

NKK SWITCHES has been a leader in the manufacturing of miniature and illuminated switches for over half a century. The company was founded in 1951 by Shigeo Ohashi who had the vision to design and produce high quality, highly reliable industrial switches. Throughout its history, NKK's commitment to quality, excellence and innovation is apparent when reviewing the 500+ patents and numerous quality and innovation awards granted to this company. Its customers span the globe in their depth and variation.

Products and Services

The development, manufacturing and sales of each type of industrial-use switches

Toggles, Rockers, Pushbuttons,
Illuminated Toggles(rockers, pushbuttons and slides),
Multi-Function Pushbuttons,
Keylocks; Rotaries, Slides, Dips, Tactile, Tilts
Touch Panels (digital and analogue type)
Sheet Keyboard Switches (mechanical key and printer connection-point type), Indicating lamps



TB01 Series



Pushbuttons, Illuminated Pushbuttons



Membranes



Company Profile

<https://www.suganuma-ss.co.jp/en>

Company Name	Suganuma Seisakusho Co., Ltd.		
Representative	Nobuyuki Suganuma President and CEO	Capital	JPY 96 million
Established	December 1, 1939	Net Sales	JPY 1,300 million (As of May 2023)
Employees	74		
Head Office	JRE-Omori Station East Exit Building 4F, 1-5-1 Omori-kita, Ota-ku, Tokyo, 143-0016 Japan		
Manufacturing Facilities, Branches and Subsidiaries	Tsukuba Factory: 1130 Nekozane, Bando City, Ibaraki, 306-0616 Japan Domestic: 4 locations (Shizuoka, Nagoya, Osaka, Kita-Kyushu)		

Overview

Since our foundation in 1893, we have been advancing and maintaining the quality of our overhead contact fittings. We manufacture all kinds of products around messenger wires such as Hanger Ear sustaining the trolley wires, steel products/signs attached to Electric poles, etc.

In addition to the Hokuriku/Hokkaido Shinkansen business, in recent years, we also have been working actively on overseas railway electrification.

Overseas performance

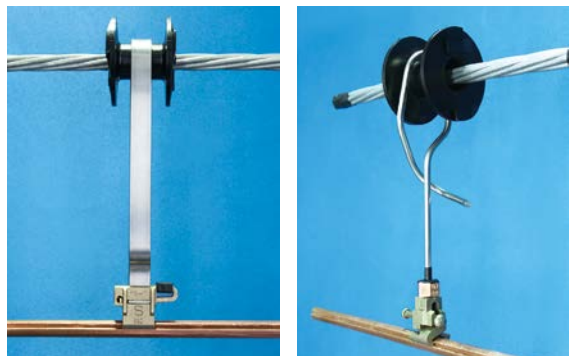
- Strand Line / Myanmar
- Jabotabek Railway / Indonesia
- Vietnam Ho Chi Minh City Railway Line 1 / Vietnam
- Jakarta Urban High Speed Rail / Indonesia
- Taiwan High Speed Rail / Taiwan



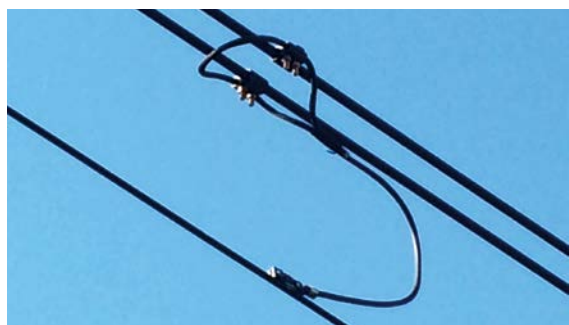
Metal products

- V truss beam
- Steel pipe mast
- Hinged cantilever
- Drop arm
- Parallel frame steel pipe
- Supporting arm
- Pole band
- Various other steel products

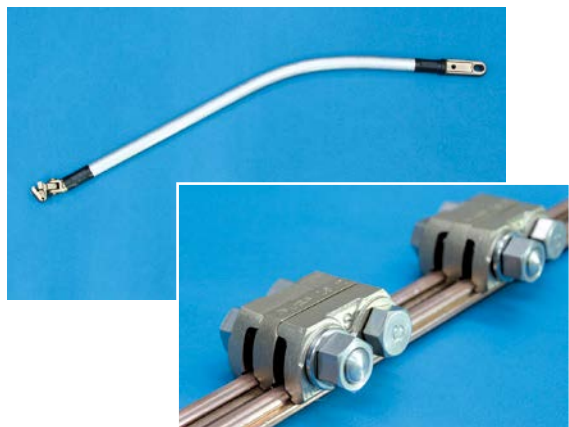
Products and Services



Hanger Ear Type B (Left), Type D (Right)
Combination Example: Hanger Ear + Messenger wire protector



Connector Fitting (Hallow Screw type, Clamp Ear type)



Pull-off Arm Type Arch (Left), Double Ear (Right)

Company Profile

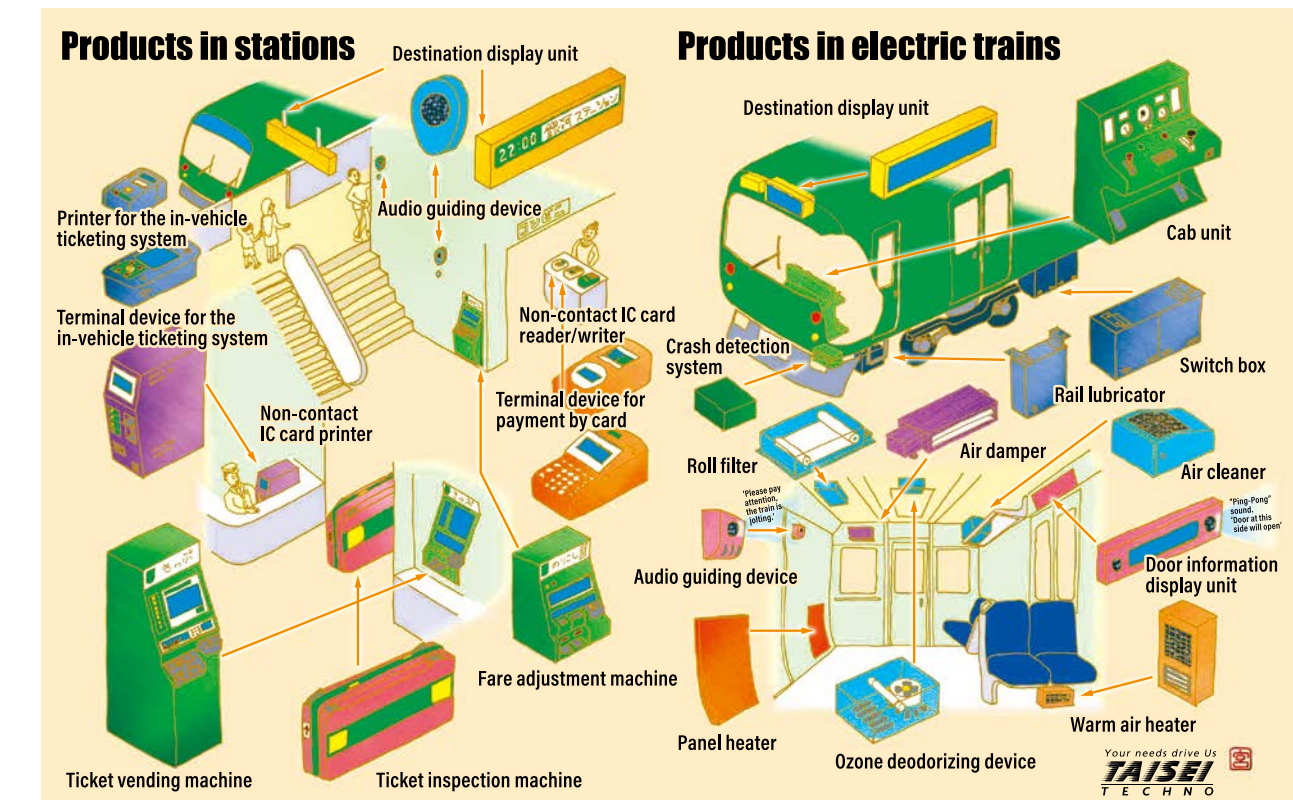
<https://www.aiseix.net/en/>

Company Name	Taisei Techno Co., Ltd.		
Representative	Tomohiko Shibagaki President and Representative Director	Capital	JPY 20 million *
Established	October 1, 1946	Total Assets	JPY 3.6 billion *
Employees	100	Net Assets	JPY 2 billion *
Head Office	4-4-6 Oh'i, Shinagawa-ku, Tokyo 140-0014 Japan		
Manufacturing Facilities, Branches and Subsidiaries	Domestic: Higashinari-ku, Osaka City (Vehicle parts manufacturing plant) Overseas: Billings City, Montana, USA (Wind Power Production Plant)		

* : As of September 30, 2022

Overview

Since its foundation over half-century ago, Taisei Techno has continuously challenge innovative field based on creative technology and wisdom. Starting initially with the production of rail car components for Japan National Railways Corporation which has been reorganized as JR, we soon found ourselves dedicated widely to the maintenance and repair of ticket-vending machine and ticket-gate machine. As our business has developed, we have expanded our horizon into computer related business, design and manufacturing of electric components for railcar and automatic control board for industrial use. And we are now deeply involved in the development of cutting edge industry. Since we share much concern of global warming, we have tried to reduce fossil fuel consumption through railway infrastructure and developed wind turbine to promote the use of natural energy. We also try to marge comfortability and energy efficiency in the railcar cabin. Thus, we are the company that is very friendly to the environment of the Earth.





Company Profile

<https://www.toho-sf.co.jp/english/3388>

Company Name	TOHO SHEET & FRAME CO., LTD.		
Representative	Yasutomo Suzuki President	Capital	JPY 350 million
Established	March 30, 1937	Net Sales	JPY 10 billion
Employees	175		
Head Office	Asahi BLDG, 3-12-2 Nihonbashi, Chuo-ku, Tokyo 103-0027, Japan		
Manufacturing Facilities, Branches and Subsidiaries	Manufacturing Facilities: Yachiyo Plant Office location: Sapporo Office, Tohoku Office, Niigata Office, Osaka Office		

* : As of March 2023

Overview

1. Manufacture, sales and processing of galvanized iron plates, metal building materials, and other metal products.
2. Manufacture and sales of steel drums.
3. Processing, sales and construction of vehicle resin products.
4. Buying and selling of building materials in each of the above issues.

Products and Services

TOHO offer a wide range of polycarbonate products from the world, with technical advice from engineers.

1 I.G.P (Insulation Glass & Polycarbonate) *Crack Resistant Windows

I.G.P is window material that has improved impact resistance and condensation prevention by uniting polycarbonate and glass layers.

2 CLEAR HEAT

Clear Heat is an innovative polycarbonate sheet with planar heating characteristics and high transparency. Applications include windows for railway vehicles, traffic signal covers in snowy regions, and security camera covers.

3 Polycarbonate Molded Products

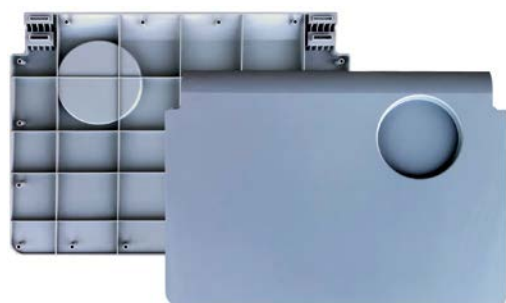
We offer polycarbonate molded products that meet the regulations of each country, whether in Japan or overseas.



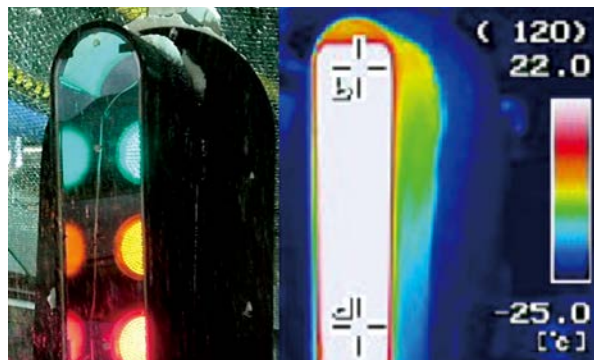
I.G.P (Side Window)



CLEAR HEAT (Front Window)



Polycarbonate Module Product (Table)



CLEAR HEAT (Traffic Light Hood Cover)



Company Profile

<http://yutaka-ss.co.jp/en/>

Company Name	Yutaka Manufacturing Co., Ltd.		
Representative	Keiichi Matsumoto President	Capital	JPY 99 million *
Established	September 8, 1948	Total Assets	JPY 6,568 million *
Employees	174	Net Assets	JPY 4,822 million *
Head Office	68, Kenzaki-machi, Takasaki-shi, Gunma 370-0883 Japan		
Manufacturing Facilities, Branches and Subsidiaries	Takasaki City (Head Office, Plant), Ota-ku, Tokyo (Tokyo Sales Office), Kita-ku, Osaka City (Osaka Sales Office)		

* : As of March 31, 2023

Overview

Since our founding in 1948, we at Yutaka Manufacturing have shouldered a share in the building of social infrastructure, such as traffic and power lines, as a specialized manufacturer of electronic components, notably the jumper coupler used in railroad cars.

Starting our business with manufacture of wiring couplers for railway cars, we have developed and manufactured Japan's first domestically produced multi-contact three-phase high-voltage jumper coupler, automatic train coupling and uncoupling system that automatically performs splitting and merging operations of trains, as well as compact and lightweight one-touch connectors, all of which making use of our own independent technology. And most recently, we have developed and delivered connectors and electric automatic couplers compatible with railway ethernet, for operation on lines open for traffic.

Overseas, we have many achievements from high-speed vehicles to urban transportation in each country such as China, Taiwan, Southeast Asia, Middle East, USA.

In the future, guided by our principles of Customer Reliance, Unwavering Effort, and Reliance of Society, we aim to become a unique enterprise recognized worldwide. We boldly face this challenge, unified as one.

Products and Services

Connector Coupler

YUTAKA

YL11 Jumper Coupler

EY6 EY7 Ethernet-compatible Connectors

WKET161 Electric Coupler

YH400 High-voltage Connectors

YH70 High-voltage Connectors



Company Profile

<https://www.mhi.com>

Company Name	Mitsubishi Heavy Industries, Ltd.		
Representative	Seiji Izumisawa President and CEO	Capital	JPY 265.6 billion * ¹
Established	January 11, 1950	Orders Received	JPY 4,501.3 billion * ²
Employees	Consolidated: 77,283 * ¹ Non-consolidated: 21,634 * ¹	Revenue	JPY 4,202.7 billion * ²
Head Office	2-3, Marunouchi 3-chome, Chiyoda-ku, Tokyo, 100-8332, Japan		
Manufacturing Facilities, Branches and Subsidiaries	Domestic Works & Plants: 12 Group Companies: Domestic 67, Overseas 187 * ¹		

*¹ : As of March 31, 2023 *² : Consolidated, as of March 31, 2023/IFRS

Overview

[Business area]

Energy Systems, Plants & Infrastructure Systems, Logistics, Thermal & Drive Systems, Aircraft, Defense & Space

[Major Transportation Systems Products & Services]

Automated Guideway Transit (AGT), Railway Systems (High-speed Railways/Overseas Metro Systems), Air Brake Systems, After-Sales Services for Transportation Systems

Mitsubishi Heavy Industries (MHI) Group is one of the world's leading industrial groups, spanning energy, logistics & infrastructure, industrial machinery, aerospace and defense.

MHI Group combines cutting-edge technology with deep experience to deliver innovative, integrated solutions that help to realize a carbon neutral world, improve the quality of life and ensure a safer world.

MHI will utilize its extensive track record providing AGT systems in Japan, Singapore, South Korea, UAE (Dubai), and other areas throughout the world, along with the strength of its high-quality O&M (operations and maintenance) services to compete for the lead in the market for new transport system in Japan and overseas.

MHI will continue supplying safe and low-carbon transport solutions that will help support the economic development and provide better convenience to people in countries around the world.

In addition, we will strengthen after-sales services and localization, and provide high value-added services that meet customer needs, as well as coordinate with existing service centers around the world for facility renovation projects, and provide new types of leading-edge, high-quality services incorporating digital and AI technologies.



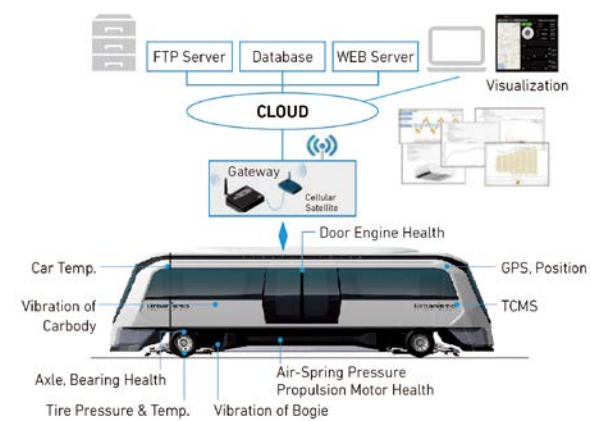
Macau Light Rapid Transit (LRT)



Taiwan High Speed Rail



O&M Services



Remote Status Monitoring Services

Company Profile

<https://www.toyo-eng.com/jp/en/>

Company Name	Toyo Engineering Corporation		
Representative	Eiji Hosoi President & CEO	Capital	JPY 18.2 billion *
Established	May 1, 1961	Net Sales	JPY 192.9 billion *
Employees	6,686 *		
Head Office	2-8-1 Akanehama, Narashino-shi, Chiba 275-0024, Japan		
Branches and Subsidiaries	Japan: 7 locations Overseas: 12 locations		

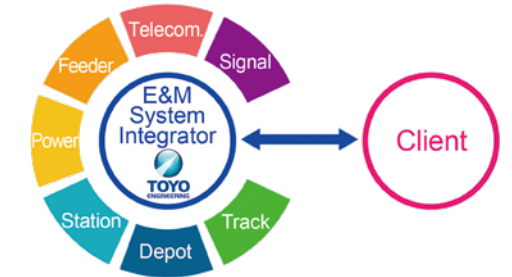
* : Consolidated, as of March 31, 2023

Overview

Since its establishment in 1961, Toyo Engineering (TOYO) has been providing Engineering, Procurement and Construction (EPC) services on a lump-sum turnkey basis in various business fields such as oil refining, gas processing, oil & gas development, petrochemicals, fertilizers and other fields in more than 60 countries. TOYO has been recently focusing on the infrastructure field as well. In April 2015, TOYO as a consortium member with the Japanese companies received an order for the Jakarta MRT Railway System and Track construction project, which is the first subway system in Indonesia, and completed it in March 2019.

TOYO, as a Japanese system integrator of the railway system, constantly strives to contribute to the export of the high-quality infrastructure, led by the Japanese government, utilizing the management capabilities of overseas projects cultivated over many years.

We also aim to serve society by implementing our mission as "Engineering for Sustainable Growth of the Global Community" through engineering execution that provides overall optimization by technology integration.





Company Profile <https://www.itochu.co.jp/en>

Company Name	ITOCHU Corporation		
Representative	Masahiro Okafuji Chairman & Chief Executive Officer	Capital	JPY 253 billion *
Established	December 1, 1949	Total Assets	JPY 13,111 billion *
Employees	Non-consolidated: 4,187 Consolidated: 110,698	Net Assets	JPY 5,463 billion *
		Revenue	JPY 13,945 billion *
		Operating Income	JPY 701 billion *
Head Office	Tokyo Headquarters: 5-1, Kita-Aoyama 2-chome, Minato-ku, Tokyo 107-8077, Japan Osaka Headquarters: 1-3, Umeda 3-chome, Kita-ku, Osaka, 530-8448, Japan		
Branches and Subsidiaries	7 Domestic, 86 Overseas		

* : Consolidated, as of March 2023

Overview

We bring to bear the collective strengths of a trading company, including information gathering and development capabilities obtained through involvement in international projects over many years. Our expertise, including finance structuring capacity, investment and coordinating functions among stakeholders, contributes to the successful realization of projects in the field of oil, gas and petrochemicals; power generation and transmission; and social and transportation infrastructure such as railways, bridges, and ports. In the railway sector, we are promoting projects through alliances with Japanese and overseas manufacturers to cater to growing demand for railways.

In Hong Kong, we have continuously supplied rolling stock and spare parts to MTR for over 20 years. In Ukraine, we contributed to the reduction of 35% power consumption through the supply of the latest energy saving equipment for rolling stocks and the using the regenerative power.

In 2014, we secured a contract under PPP scheme to provide trains to the state government of Queensland, Australia.



Modernization of metro cars for Kiev Metro (Ukraine)



Supply of New Generation Rolling Stock to Queensland government (Australia)



Supply of rolling stock to MTR (Hong Kong)

Company Profile <https://www.marubeni.com/en/>

Company Name	Marubeni Corporation		
Representative	Masumi Kakinoki President and CEO, Member of Board	Capital	JPY 263 billion *
Established	December 1, 1949	Total Assets	JPY 7,953 billion *
Employees	4,340	Net Assets	JPY 2,982 billion *
Head Office	4-2, Ohtemachi 1-chome, Chiyoda-ku, Tokyo 100-8088, Japan	Net Sales	JPY 9,190 billion *
Branches and Subsidiaries	130 branches and offices consisting of 12 domestic branches and offices, 55 overseas branches and offices and 29 overseas corporate subsidiaries with 34 offices		
		Operating Income	JPY 340 billion *

* : As of March 31, 2023

Overview

Our railway business commenced with the export of products supplied by Japanese manufacturers, but we have expanded our business field and now engage in the delivery of all railway systems in a whole package including signaling, communication and power such as Roca Line Electrification in Argentina (45km/21stns) and Busan Subway Line No. 1 in Korea (40km/40stns), which were completed in 1980's, and have been contributing to develop transport infrastructure in Asia, Latin America and Middle East. We also have strengthened cooperation with Japanese manufacturers and operators, and we are participating in not only the railway system supply but the maintenance business such as Bangkok MRT Purple Line in Thailand (21km/16stns). Besides, through supply of railway systems, we are contributing to transportation capacity expansion in Philippines, the modernization of the national railway in Myanmar and executing contracts in Bangladesh and so on. We are also actively involved in PPP projects such as Gold Coast Light Rail (20km/19stns) and Sydney Metro North West (35km/13stns) in Australia, and have achieved as a comprehensive railway operator from construction to operation and maintenance. Regardless of country or region, not only introduction of environmentally friendly railway systems, but the solution for energy saving and operational and maintenance efficiency of existing systems are necessitated to realize a sustainable society.

We will respond to the needs of society as a total solution provider in the field of public transport, applying the know-how we have amassed through our experiences in various projects.



Bangkok MRT Purple Line in Thailand (21km/16stations)



Taoyuan International Airport Access MRT System in Taiwan (51km/22stations)



Gold Coast Light Rail in Queensland, Australia (20km/19stations)



Sydney Metro Northwest in New South Wales, Australia (35km/13stations)



Company Profile

<https://www.mitsubishicorp.com/jp/en/>

Company Name	Mitsubishi Corporation		
Representative	Katsuya Nakanishi President & CEO	Capital	JPY 204.4 billion
Established	April 1, 1950	Total Assets	JPY 22,152.8 billion *
Employees	Non-consolidated: 5,448 * Consolidated: 79,706 *	Net Assets	JPY 9,124.4 billion *
Head Office	3-1, Marunouchi 2-Chome, Chiyoda-ku, Tokyo, 100-8086, Japan	Net Sales	JPY 21,571.9 billion *
Branches and Subsidiaries	121 locations (Japan 11 • Overseas 110) (As of April 1, 2023)		
		Consolidated Net Profit	JPY 1,180.6 billion *

* : As of March 31, 2023

Overview

Mitsubishi Corporation (MC) has been serving the rail industry globally since the 1960s starting with the delivery of trams to Egypt. Its track record extends from rolling stock supply to large-scale full turnkey projects. Some of the major projects MC has completed in the 2000s are; Delhi Metro, a world-first rail project registered with the Clean Development Mechanism, and Dubai Metro, one of the world's longest driverless rail projects. In recent years, MC has entered into rail PPP business, with its participation in the LRT system in Canberra, Australia, using its experience and expertise built up through various infrastructure operation business such as airport, power generation and water.

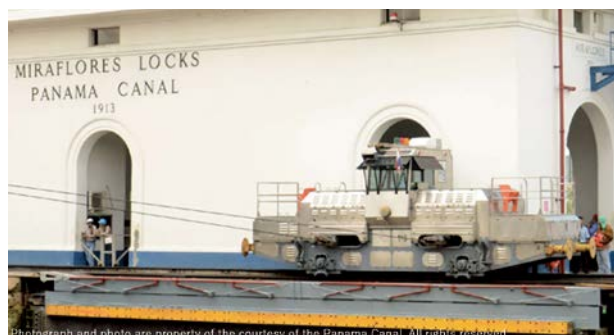
MC aims to provide the best solution to meet various demands of the clients and other stakeholders including the growing demand for operation & maintenance support. MC will contribute to stable economic growth and social development through its activity in the rail sector.

【Major Project】

- Panama: Panama Canal Locomotive
- India: Rolling Stocks for Delhi Metro & Bangalore Metro
- Egypt: Rolling Stocks for Cairo Metro
- Bangladesh: Rolling Stocks & Depot Equipment for Dhaka MRT Line 6
- Australia: Construction, Operation and Maintenance of LRT in Canberra
- Singapore: Sengkang Punggol LRT Project
- Singapore: Changi International Airport APM
- United Arab Emirates: Dubai Metro Project
- Qatar: Doha Metro Project



United Arab Emirates: Dubai Metro



Panama: Panama Canal Locomotive



Singapore: Changi International Airport APM



Egypt: Rolling Stocks for Cairo Metro

Company Profile

<https://www.mitsui.com/jp/en>

Company Name	MITSUI & CO., LTD.		
Representative	Kenichi Hori President and Chief Executive Officer	Capital	JPY 342 billion *
Established	July 25, 1947	Total Assets	JPY 15,400 billion *
Employees	5,449 (Consolidated 46,811) (As of March 31, 2023)	Net Assets	JPY 6,565 billion *
Head Office	2-1, Otemachi 1-chome, Chiyoda-ku, Tokyo 100-8631, Japan	Net Sales	JPY 14,306 billion *
Branches and Subsidiaries	128 offices in 63 countries/ regions Domestic: 11 Overseas: 117 (As of March 31, 2023)		
		Net Income	JPY 1,130 billion *

* : Consolidated, as of March 31, 2023

Overview

We have been developing and promoting various kinds of railway-related business in both Japan and overseas countries. We have not only been involved in numerous rolling stock exports and the construction of railway infrastructure projects, but have also taken stakes in railway operation companies overseas in collaboration with Japanese railway operators.

We strive to spread the Japanese railway industry's safe and efficient operation know-how and skills to other countries, in order to contribute to economic development and quality of life for people in each country by alleviating traffic congestion in urban areas and promoting modal shifts, thereby realizing a reduction in the burden on the global environment.

【Major Projects completed, under construction or in operation】

- Construction of Railway Systems and Trackwork for the North-South Line of MRTJ in Jakarta, Indonesia
- Civil Engineering and Tracklaying work, Supply and Installation of Signaling and Telecommunication Systems, Supply of Track Maintenance Equipment for the Western Dedicated Freight Corridor, India
- Passenger Railway Operation, UK (Greater Anglia • West Midlands Trains)
- Passenger Railway Operation, Brazil (SuperVia)



Civil Engineering and Tracklaying work for the Western Dedicated Freight Corridor, India



Track Maintenance Equipment for the Western Dedicated Freight Corridor, India



Passenger Railway Operation, UK (West Midlands Trains)



Passenger Railway Operation, Brazil (SuperVia)

Company Profile

<https://plantsystems.mitsui.co.jp/en/>

Company Name	Mitsui & Co. Plant Systems, Ltd.		
Representative	Tadateru Tanigaki President & Chief Executive Officer	Capital	JPY 1,555 million
Established	April 1, 2007		
Employees	299 (As of September 1, 2023)		
Head Office	Shiodome Sumitomo Bldg. 26F, 1-9-2, Higashi-Shimbashi, Minato-ku, Tokyo, 105-0021, Japan		
Branches and Subsidiaries	14 bases in Japan		

Overview

【Business Activities and Track Records】

We, Mitsui & Co. Plant Systems, Ltd., are primarily engaging in the export, import and intermediate trade of the railway-related equipment.

In the import and sales business of railway equipment to Japan, we are handling the high-performance and state-of-the-art track maintenance machines, rolling stock products, and materials for track and electric facilities from overseas, and deliver to Japanese railway operators, etc.

On the other hand, with regard to the export and sales business, we are focusing to supply the railway-related equipment for the ODA project such as the track maintenance machines for the Myanmar Yangon-Mandalay Railway Project, the track construction machines and track materials for the Indian High Speed Railway Project, etc. Through the sales of these railway-related equipment, we will contribute to the realization of comfortable riding, the safety and stability of railway operations and the efficiency of maintenance activities for the Shinkansen and conventional lines in Japan, as well as the overseas development of railway technology from Japanese suppliers and the construction of overseas railway infrastructure.

Furthermore, we will surely contribute to the development of the railway and mobility industry as a solution provider to market needs through 1) our knowledge and experience in the railway and mobility industry over many years and 2) collaboration with our parent company, Mitsui & Co., Ltd.



YAMANAKA/Cement Asphalt Mortar Injection Car



Speno International/Rail Grinding Machine



Plasser & Thuerer/Multiple Tie Tamper



Ball Bearing Base Plate

Company Profile

<https://www.sojitz.com/en/>

Company Name	Sojitz Corporation		
Representative	Masayoshi Fujimoto President and CEO	Capital	JPY 160 billion *
Established	April 1, 2003	Total Assets	JPY 2,660 billion *
Employees	Non consolidated 2,613 Consolidated 21,963 (As of September 30, 2023)	Net Assets	JPY 876 billion *
Head Office	1-1, Uchisaiwaicho 2-chome, Chiyoda-ku, Tokyo 100-8691, Japan		
Branches and Subsidiaries	Domestic: 5 Overseas: 79 (As of September 30, 2023)		

* : Consolidated, as of March 31, 2023

Overview

Sojitz railway business has a long history, commencing with the export of the first railway vehicles (Electric Multiple-Units) to Argentina in 1956. Since then, we have accumulated export results to overseas mainly in North America and the total export has reached more than 12,000 vehicles.

We also work on several EPC (Engineering, Procurement and Construction) projects utilizing Japanese tied loans and contributing to regional, social and economic development. In recent years, we have been executing the Western Dedicated Freight Corridor ("Western DFC") Project and High-speed Rail Project between Mumbai and Ahmedabad as a consortium leader. Also, we have expanded our business portfolio to service-oriented business such as MRO and railcar leasing.

【Main project and under construction】

- India : Western DFC Project (Civil & Track works, Electrification, Signals & Telecommunications works)
- India : High-speed Rail Project between Mumbai and Ahmedabad (Maintenance Depot Package)
- Indonesia : Jakarta Mass Rapid Transit Railway Business (Equipment Supply for Maintenance Depot Package)
- Canada : MRO Business in North America (Cad Railway Industries Ltd./ Caltrax Inc.)
- USA : Railcar Leasing Business (Southwest Rail Industries Inc.)

We will continue to work for improving regional infrastructure through our value-added activities, aiming at fostering economic development and increasing our contribution to society.



Western DFC Project (Civil & Track works)



High-speed Rail Project between Mumbai and Ahmedabad



North American MRO Business



Railcar Leasing Business



Company Profile

<https://www.sumitomocorp.com/en/jp>

Company Name	Sumitomo Corporation		
Representative	Masayuki Hyodo Representative Director, President and Chief Executive Officer	Capital	JPY 220 billion * ¹
		Total Assets	JPY 10,106.3 billion * ¹
Established	December 24, 1919	Net Assets	JPY 3,977.5 billion * ¹
Employees	5,223 (Consolidated Base: 78,235) * ¹ It includes 155 persons whom overseas branches and offices of the Company employ.	Net Sales	JPY 6,817.9 billion * ¹
		Basic Profit * ²	JPY 509.3 billion * ¹
Head Office	OTEMACHI PLACE EAST TOWER, 3-2 Otemachi 2-Chome, Chiyoda-ku, Tokyo 100-8601, Japan		
Branches and Subsidiaries	129 locations (Japan: 20, Overseas: 109) in 66 countries and regions		

Overview

We are actively developing numerous railway-related businesses in the world. Recently, road congestion and air pollution are main social issues with centralized population in urban areas. Demand for less polluting means of transportation will be risen further across the world. We have contributed to the economic growth and the improvement of quality of life by implementing projects successfully together with the excellent partners both in Japan & overseas.

[Main project under construction]

- Vietnam: Ho Chi Minh City Metro Line 1 (Civil Elevated)
- Indonesia: Rolling Stocks for the North-South Line of MRTJ
- Myanmar: Yangon-Mandalay Railway Improvement Project
- Thailand: Red Line Construction Project
- Philippines: Rehabilitation and Maintenance project of Manila MRT-3
- Myanmar: Yangon Circular Railway Improvement Project

Construction of Railway system is usually state-funded project, which requires the contractors procuring high level of management soundness, integrity, project management expertise and product quality. The strength of us lies in its ability to deliver high standard of value across all criteria based on its wide range of experience.



Procurement of Rolling Stocks for the North-South Line of MRTJ in Jakarta, Indonesia



Rehabilitation and maintenance works of MRT-3 in Manila, Philippines



Automated People Mover in Tampa, USA



Ho Chi Minh City Metro Line 1 (Civil Elevated) in Vietnam

Company Profile

<https://www.yashima-co.co.jp/en>

Company Name	Yashima & Co., Ltd.		
Representative	Chairman: Atsushi Satoh President: Kazuaki Takada	Capital	JPY 99.9 million
Established	October 28, 1948	Total Assets	JPY 21.8 billion *
Employees	257 *	Net Assets	JPY 9.1 billion *
Head Office	6-5, Nihonbashi kabuto-cho, Chuo-ku, Tokyo 103-0026 Japan	Net Sales	JPY 25.5 billion *
Branches and Subsidiaries	Operating Income JPY 65 million *		
Japan:	[Branch] Osaka, Nagoya [Sales Office] Sapporo, Sendai, Niigata, Mito, Hamamatsu, Takamatsu, Hiroshima, Kyushu		
Overseas:	[Branch] Delhi, Myanmar [Representative Office] Jakarta, Manila, and Hanoi [Office] Mumbai, London		
China:	Yashima (Shanghai) Trading Co., Ltd. (Pudong, Qingdao, Shenzhen)		

* : Consolidated, as of March 31, 2023

Overview

Since our company's establishment in 1948, we have been supplying industrial equipment and a wide range of spare parts to numerous domestic railway companies and manufacturers.

We have also contributed to assurance, safety and quality of the railway industry by delivering certified products and services for machinery, signals and other railway yard systems.

We have taken advantage of our experience in the domestic railway industry for our proactive expansion of business in overseas markets and already made great achievements in our business operations to several countries such as the U.K., the birthplace of railway, as well as China which is advancing rapidly in the technological development of high-speed railway network.

In the recent years, we are focusing on the transferal business of used Japanese trains destined for reuse in South-east Asian countries and proposing related equipment and replacement parts for maintenance.

Furthermore, we have been supplying railway maintenance vehicles for the overseas railway industry.

Through these our expanding overseas business, we will be making further contribution to the development and maintenance of railway infrastructures in the world.

- [Our Current Railway Business Areas]
- United Kingdom
 - Taiwan
 - Indonesia
 - Thailand
 - Italy
 - Korea
 - Philippines
 - Myanmar
 - China
 - Vietnam
 - Malaysia
 - Australia



JORSA MEMBERS

-
- ALNA SHARYO CO., LTD.
 - Hitachi, Ltd.
 - JAPAN TRANSPORT ENGINEERING COMPANY
 - Kawasaki Railcar Manufacturing Co., Ltd.
 - The Kinki Sharyo Co., Ltd.
 - Niigata Transys Co., Ltd.
 - NIPPON SHARYO, LTD.
 - Fuji Electric Co., Ltd.
 - MITSUBISHI ELECTRIC CORPORATION
 - Toshiba Infrastructure Systems & Solutions Corporation
 - TOYO DENKI SEIZO K.K.
 - Kyosan Electric Manufacturing Co., Ltd.
 - NIPPON SIGNAL CO., LTD.
 - CombiWith Corporation
 - DAIDO CASTINGS CO., LTD.
 - The Furukawa Battery Co., Ltd.
 - Hayashi Soji Corporation
 - Hitachi Nico Transmission Co., Ltd.
 - KINTETSU RAILCAR ENGINEERING CO., LTD.
 - Nabtesco Corporation
 - NAKAMURA JICO CO., LTD.
 - NARITA MFG., LTD.
 - Nihon Sharyou Senjouki Co., Ltd.
 - NIPPON STEEL CORPORATION
 - NKK SWITCHES CO., LTD.
 - Suganuma Seisakusho Co., Ltd.
 - Taisei Techno Co., Ltd.
 - TOHO SHEET & FRAME CO., LTD.
 - Yutaka Manufacturing Co., Ltd.
 - Mitsubishi Heavy Industries, Ltd.
 - Toyo Engineering Corporation
 - ITOCHU Corporation
 - Marubeni Corporation
 - Mitsubishi Corporation
 - MITSUI & CO., LTD.
 - Mitsui & Co. Plant Systems, Ltd.
 - Sojitz Corporation
 - Sumitomo Corporation
 - Yashima & Co., Ltd.

JORSA MEMBERS 2023

Published in December 2023

Japan Overseas Railway System Association

Tekko Bldg. 3F, 1-8-2 Marunouchi, Chiyoda-ku, Tokyo
100-0005 JAPAN

TEL : +81-3-3201-3145 FAX : +81-3-3201-3143

E-mail : infoweb@jorsa.or.jp

<https://www.jorsa.or.jp/en/>